

**ATHENS CITY BOARD OF EDUCATION**  
**FINANCIAL STATEMENTS**  
**SEPTEMBER 30, 2021**



ATHENS CITY BOARD OF EDUCATION  
FINANCIAL STATEMENTS  
SEPTEMBER 30, 2021

**Athens City Board of Education**  
**Table of Contents**  
**September 30, 2021**

---

	<u>PAGE</u>
<b>I. INTRODUCTORY SECTION</b>	
List of Principal Officers .....	A
Organizational Chart of the Athens City Board of Education .....	B
<b>II. FINANCIAL SECTION</b>	
Independent Auditor's Report.....	i
<b>Required Supplementary Information:</b>	
Management's Discussion and Analysis .....	iii
<b>Basic Financial Statements:</b>	
Government-Wide Financial Statements:	
Statement of Net Position .....	1
Statement of Activities.....	2
Fund Financial Statements:	
Balance Sheet – Governmental Funds .....	3
Reconciliation of the Balance Sheet of Governmental Funds to the Statement of Net Position .....	4
Statement of Revenues, Expenditures, and Changes in Fund Balances – Governmental Funds .....	5
Reconciliation of the Statement of Revenues, Expenditures, and Changes in Fund Balances of Governmental Funds to the Statement of Activities .....	6
Statement of Fiduciary Net Position – Fiduciary Funds .....	7
Statement of Changes in Fiduciary Net Position – Fiduciary Funds.....	8
Notes to Financial Statements .....	9
<b>Required Supplementary Information:</b>	
Schedule of Revenues, Expenditures, and Changes in Fund Balance – Budget and Actual – General Fund.....	34
Notes to Schedules of Revenues, Expenditures, and Change in Fund Balance – Budget and Actual .....	35
Schedule of Proportionate Share of the Net OPEB Liability .....	36
Schedule of OPEB Contributions.....	37
Schedule of Proportionate Share of the Net Pension Liability.....	39
Schedule of Employer Contributions .....	40

# Athens City Board of Education

## Table of Contents

**September 30, 2021**

---

### **Reports Required by Government Auditing Standards:**

Report on Internal Control Over Financial Reporting and on Compliance and Other Matters Based on an Audit of Financial Statements Performed in Accordance with Government Auditing Standards .....	41
Independent Auditor's Report on Compliance for Each Major Program and on Internal Control Over Compliance Required by the Uniform Guidance; and Report on the Schedule of Expenditures of Federal Awards Required by the Uniform Guidance.....	43

### **Schedules of Expenditures of Federal Awards:**

Schedule of Expenditures of Federal Awards Year Ended September 30, 2021 .....	46
Notes to the Schedule of Expenditures of Federal Awards.....	48

### **Schedules of Findings and Questioned Costs:**

Section I Summary of Auditors Results .....	49
Section II Financial Statement Findings .....	49
Section III Federal Award Findings and Questioned Costs Year Ended September 30, 2021 .....	49
Schedule of Prior Year Findings and Questioned Costs.....	50

---

## INTRODUCTORY SECTION

---

**Athens City Board of Education**  
**List of Principal Officers**  
**September 30, 2021**

---

**MEMBERS OF THE SCHOOL BOARD**



Beverly Malone – Pres.



Jennifer Manville – V.P.



James Lucas



Scott Henry



Shannon Hutton

**SUPERINTENDENT**

Beth Patton

Superintendent

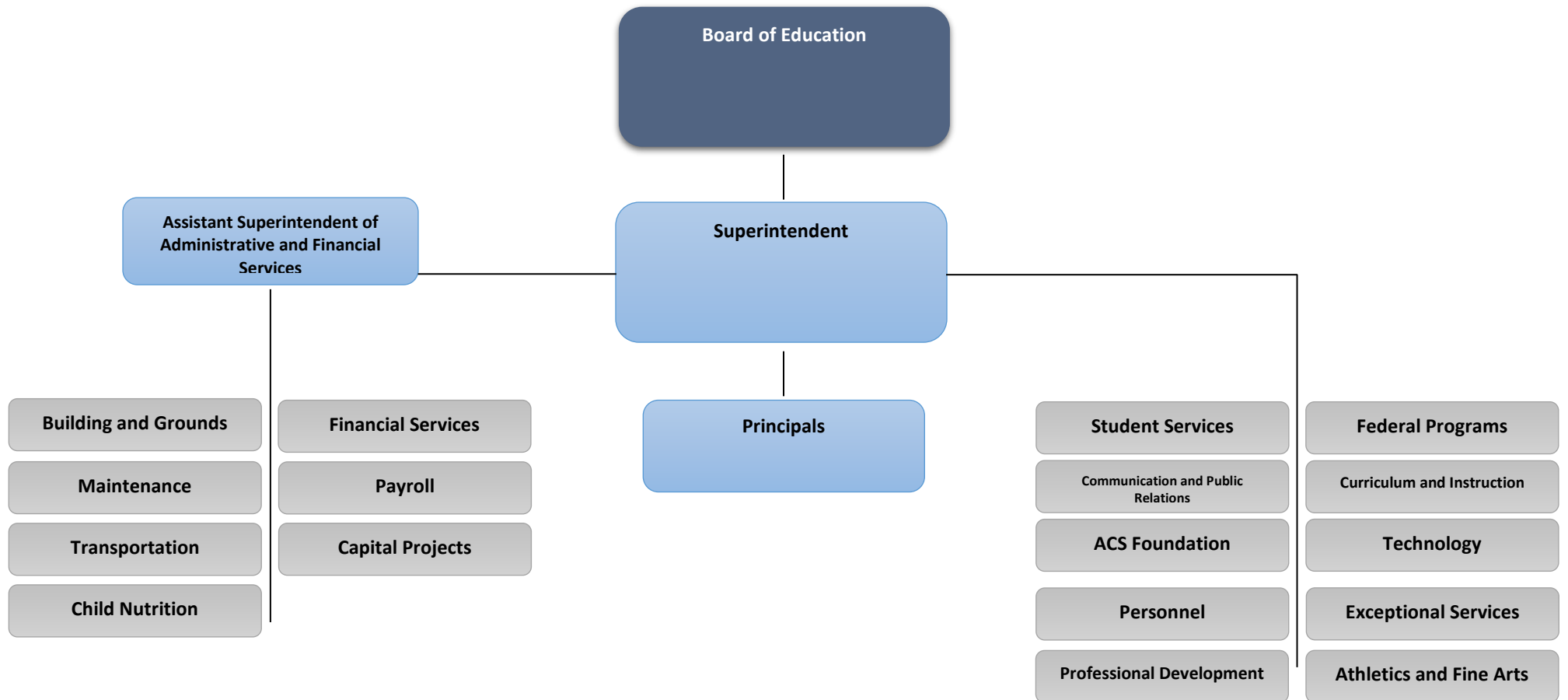
**DIRECTORS**

Garner Ezell  
Serena Owsley

Director of Curriculum and Instruction  
Chief Financial Officer and Assistant Superintendent of Administrative  
and Financial Services

**Athens City Board of Education**  
**Organizational Chart of the Athens City Board of Education**  
**September 30, 2021**

---



---

## FINANCIAL SECTION

---





---

## INDEPENDENT AUDITOR'S REPORT

---

To the Board Members  
Athens City Board of Education  
Athens, Alabama

### **Report on the Financial Statements**

We have audited the accompanying financial statements of the governmental activities, each major fund, and the aggregate remaining fund information of the Athens City Board of Education (the "Board") as of and for the year ended September 30, 2021, and the related notes to the financial statements, which collectively comprise the Board's basic financial statements as listed in the table of contents.

### ***Management's Responsibility for the Financial Statements***

Management is responsible for the preparation and fair presentation of these financial statements in accordance with accounting principles generally accepted in the United States of America; this includes the design, implementation, and maintenance of internal control relevant to the preparation and fair presentation of financial statements that are free from material misstatement, whether due to fraud or error.

### ***Auditor's Responsibility***

Our responsibility is to express an opinion on these financial statements based on our audit. We conducted our audit in accordance with auditing standards generally accepted in the United States of America and the standards applicable to financial audits contained in *Government Auditing Standards*, issued by the Comptroller General of the United States. Those standards require that we plan and perform the audit to obtain reasonable assurance about whether the financial statements are free from material misstatement.

An audit involves performing procedures to obtain audit evidence about the amounts and disclosures in the financial statements. The procedures selected depend on the auditor's judgment, including the assessment of the risks of material misstatement of the financial statements, whether due to fraud or error. In making those risk assessments, the auditor considers internal control relevant to the entity's preparation and fair presentation of the financial statements in order to design audit procedures that are appropriate in the circumstances, but not for the purpose of expressing an opinion on the effectiveness of the entity's internal control. Accordingly, we express no such opinion. An audit also includes evaluating the appropriateness of accounting policies used and the reasonableness of significant accounting estimates made by management, as well as evaluating the overall presentation of the financial statements.

We believe that the audit evidence we have obtained is sufficient and appropriate to provide a basis for our audit opinion.

### ***Opinion***

In our opinion, based on our audit and the report of other auditors, the basic financial statements referred to above present fairly, in all material respects, the respective financial position of the governmental activities, each major fund, and the aggregate remaining fund information of the Board, as of September 30, 2021, and the respective changes in financial position for the year then ended in accordance with accounting principles generally accepted in the United States of America.

---

## Emphasis of Matter

As discussed in Note 1, the basic financial statements present only the activities of the Board and do not purport to, and do not, present fairly the financial position of the City of Athens, Alabama, as of September 30, 2021, and the changes in its financial position or its cash flows for the years then ended in accordance with accounting principles generally accepted in the United States of America. Our opinion is not modified with respect to this matter.

## Other Matters

### *Required Supplementary Information*

Accounting principles generally accepted in the United States of America require that the required supplementary information, as listed in the table of contents, be presented to supplement the basic financial statements. Such information, although not a part of the basic financial statements, is required by the Governmental Accounting Standards Board, who considers it to be an essential part of financial reporting for placing the basic financial statements in an appropriate operational, economic, or historical context. We have applied certain limited procedures to the required supplementary information in accordance with auditing standards generally accepted in the United States of America, which consisted of inquiries of management about the methods of preparing the information and comparing the information for consistency with management's responses to our inquiries, the basic financial statements, and other knowledge we obtained during our audit of the basic financial statements. We do not express an opinion or provide any assurance on the information because the limited procedures do not provide us with sufficient evidence to express an opinion or provide any assurance.

### *Other Information*

Our audit was conducted for the purpose of forming opinions on the financial statements that collectively comprise the Board's basic financial statements. The "Introductory Section" is presented for purposes of additional analysis and is not a required part of the basic financial statements.

The "Introductory Section" has not been subjected to the auditing procedures applied in the audit of the basic financial statements and, accordingly, we do not express an opinion or provide any assurance on it.

## Other Reporting Required by Government Auditing Standards

In accordance with *Government Auditing Standards*, we have also issued our report dated March 31, 2022 on our consideration of the Board's internal control over financial reporting and on our tests of its compliance with certain provisions of laws, regulations, contracts, grant agreements and other matters. The purpose of that report is solely to describe the scope of our testing of internal control over financial reporting and compliance and the results of that testing, and not to provide an opinion on the effectiveness of the Board's internal control over financial reporting or on compliance. That report is an integral part of an audit performed in accordance with *Government Auditing Standards* in considering the Board's internal control over financial reporting and compliance.

*Mauldin & Jenkins, LLC*

March 31, 2022  
Athens, Alabama

# Athens City Board of Education

## Management's Discussion and Analysis

### For the Year Ended September 30, 2021

---

The Management's Discussion and Analysis (MD&A) of the Athens City Board of Education's (the "Board") financial performance provides an overview of the Board's financial activities for the fiscal year ended September 30, 2021. The intent of this discussion and analysis is to look at the Board's financial performance as a whole. The MD&A should be read in conjunction with the Board's financial statements and notes to the financial statements to enhance an understanding of the Board's financial performance.

The MD&A is an element of the Governmental Accounting Standards Board (GASB) in their Statement No. 34, *Basic Financial Statements - and Management's Discussion and Analysis - for State and Local Governments* issued June 1999. Certain comparative information between the current year and the prior year is required to be presented in the MD&A and is included in this report.

#### **Overview of the Financial Statements**

This annual report consists of a series of financial statements and notes to those statements. These statements are organized so that the reader can understand the Athens City Board of Education as a financial whole, an entire operating entity. The statements then proceed to provide an increasingly detailed look at specific financial activities. This report also includes supplementary information in addition to the basic financial statements.

#### **Government-Wide Financial Statements**

The first two statements are government-wide financial statements — the *Statement of Net Position* and the *Statement of Activities*. These provide both long-term and short-term information about the Board's overall financial status. All of the activities of the Board reported in the government-wide financial statements are classified as governmental activities. These activities include instructional, instructional support, operation and maintenance, student transportation, food services, general administration, and interest and fiscal charges. The Board has no business-type activities.

The *Statement of Net Position* presents information on all of the Board's assets and deferred outflows of resources less liabilities and deferred inflows of resources, which results in net position. The statement is designed to display the financial position of the Board. Over time, increases and decreases in net position help determine whether the Board's financial position is improving or deteriorating.

The *Statement of Activities* provides information which shows how the Board's net position changed as a result of the year's activities. The statement uses the accrual basis of accounting, which is similar to the accounting used by private-sector businesses. All of the revenues and expenses are reported regardless of when cash is received or paid. The statement identifies the extent to which each expenditure function draws from general revenues of the Board (primarily local taxes) or is financed through charges for services (such as lunchrooms) and intergovernmental aid (primarily federal programs and state appropriations).

#### **Fund Financial Statements**

The fund financial statements provide more detailed information about the Board's most significant funds — not the Board as a whole. A fund is a grouping of related accounts that is used to keep track of specific sources of funding and spending for particular purposes. The Board uses fund accounting to ensure and demonstrate fiscal accountability. Two kinds of funds — governmental funds and fiduciary funds — are presented in the fund financial statements.

Governmental funds - Most of the Board's activities are reported in governmental funds, which focus on how money flows into and out of those funds and the balances left at year-end that are available for spending. The governmental funds statements — the *Balance Sheet* and the *Statement of Revenues, Expenditures and Changes in Fund Balances* — are reported using an accounting method called modified accrual accounting, which measures cash and all other financial assets that can readily be converted to cash. The governmental fund statements provide a detailed short-term view that helps determine whether there are more or fewer financial resources that can be spent in the near future to finance the Board's programs. Because this information does not encompass the additional long-term focus of the government-wide statements, we provide additional information that reconciles the relationship (or differences) between them.

# Athens City Board of Education

## Management's Discussion and Analysis

### For the Year Ended September 30, 2021

**Fiduciary funds** - The Board is the trustee, or fiduciary, for some of its booster and parent organization activity funds, which are under the control and administration of its schools. Fiduciary funds also include the balances of custodial funds, such as accounts payable clearing and payroll clearing funds. All of the Board's fiduciary activities are reported in a separate *Statement of Fiduciary Net Position* in these financial statements. These funds are not available to the Board to finance its operations, and therefore are not included in the government-wide financial statements. The Board is responsible for ensuring that the assets reported by these funds are used for their intended purposes.

**Notes to the financial statements** provide additional information that is essential to a full understanding of the data provided in the government-wide and fund financial statements. The notes to the financial statements follow the basic financial statements.

#### Required Supplementary Information

In addition to the basic financial statements and the accompanying notes, this report also presents certain *Required Supplementary Information* (RSI) other than the MD&A, consisting of a budgetary comparison schedule for the General Fund and any major special revenue fund that has legally adopted an annual budget. The schedule includes an accompanying note explaining the differences between actual amounts as reported on the basis of budgeting and the GAAP basis of reporting. RSI also includes certain pension and OPEB schedules presented in accordance with professional standards.

#### Financial Analysis of the Board as a Whole

As noted earlier, the Athens City Board of Education has no business-type activities. Consequently, all of the Board's net positions are reported as Governmental Activities.

**Table 1**  
**Summary of Net Position**

	Governmental Activities			
	2021	Percent of Total	2020	Percent of Total
<b><u>Assets</u></b>				
Current and Other Assets	\$ 35,349,440	27.04%	\$ 24,531,515	15.42%
Capital Assets, net	95,391,571	72.96%	94,623,644	84.58%
Total Assets	130,741,011	100.00%	119,155,159	100.00%
<b><u>Deferred Outflows of Resources</u></b>				
Employers Pension Contribution	3,031,760		2,944,526	
Deferred Outflows Related to Pensions	7,820,000		4,279,000	
Employer OPEB Contribution	566,649		650,504	
Deferred Outflows Related to OPEB	9,026,674		2,474,239	
Total Deferred Outflows of Resources	20,445,083		10,348,269	
<b><u>Liabilities</u></b>				
Current and Other Liabilities	5,538,640	7.50%	4,299,767	4.76%
Long-term Liabilities	68,278,952	92.50%	55,859,140	95.24%
Total Liabilities	73,817,592	100.00%	60,158,907	100.00%
<b><u>Deferred Inflows of Resources</u></b>				
Deferred Inflows Related to Pensions	1,340,000		1,992,000	
Deferred Inflows Related to OPEB	14,609,611		16,737,736	
Total Deferred Inflows of Resources	15,949,611		18,729,736	
<b><u>Net Position</u></b>				
Net Investment in Capital Assets	89,611,750	145.91%	87,759,664	173.39%
Restricted	2,320,486	7.00%	4,473,760	8.84%
Unrestricted	(30,513,345)	-52.91%	(41,618,639)	-82.23%
Total Net Position	\$ 61,418,891	100.00%	\$ 50,614,785	100.00%

# Athens City Board of Education

## Management's Discussion and Analysis

### For the Year Ended September 30, 2021

The Board's assets and deferred outflows exceeded liabilities and deferred inflows by \$61,418,891 at the close of the fiscal year 2021 and \$50,614,785 at the close of fiscal year 2020 an increase of \$10,804,106. The majority of the Board's net position is invested in capital assets (land, buildings, and equipment) owned by the Board. These assets are not available for future expenditures since they will not be sold. Unrestricted net position — the part of net position that can be used to finance day-to-day operations without constraints established by enabling legislation, debt covenants, or other legal requirements — total (\$30,513,345) at the end of fiscal year 2021 and (\$41,618,639) at the end of fiscal year 2020 an increase of \$11,105,294. The reporting of net pension and OPEB liabilities, together with their related deferred inflows and outflows of resources have had a significant negative impact on unrestricted net position of approximately \$63.6 million as of September 30, 2021.

The Board's total revenues and expenditures are reflected in the following chart:

**Table 2**  
**Summary of Changes in Net Position**

Revenues	Governmental Activities			
	2021	Percent of Total	2020	Percent of Total
Program Revenues:				
Charges for Services	\$ 3,953,829	6.02%	\$ 3,134,366	7.06%
Operating Grants and Contributions	34,271,807	52.16%	30,372,813	49.84%
Capital Grants and Contributions	1,436,622	2.19%	1,361,399	2.43%
Total Program Revenues	39,662,258		34,868,578	
General Revenues:				
Property Tax	3,339,430	5.08%	3,011,775	4.67%
Sales Tax	15,563,421	23.68%	13,505,264	19.45%
Alcohol Beverage Tax	412,502	0.63%	443,169	0.70%
Other Taxes	36,586	0.06%	36,027	0.06%
Gain on Disposition of Capital Assets	-	0.00%	604,007	0.43%
Grants and Contributions Not Restricted	1,330,582	2.02%	347,841	6.37%
Investment Earnings	20,832	0.03%	109,807	0.17%
Miscellaneous	5,346,054	8.13%	5,417,758	8.82%
Total General Revenues	26,049,407		23,475,648	
Total Revenues	65,711,665	100.00%	58,344,226	100.00%
Expenses				
Instructional Services	29,753,431	54.19%	29,389,551	55.35%
Instructional Support Services	8,219,095	14.97%	7,036,461	13.22%
Operation & Maintenance Services	5,412,011	9.86%	5,415,274	10.35%
Student Transportation Services	1,527,276	2.78%	1,424,689	2.93%
Food Services	681,183	1.24%	1,648,007	5.38%
General Administrative Services	2,333,338	4.25%	2,125,362	3.14%
Interest and Finance Charges	4,025,290	7.33%	4,061,133	7.57%
Other Expenses	2,955,935	5.38%	1,590,750	2.06%
Total Expenses	54,907,559	100.00%	52,691,227	100.00%
Change in Net Position	10,804,106		5,652,999	
Net Position, Beginning	50,614,785		44,961,786	
Net Position, Ending	\$ 61,418,891		\$ 50,614,785	

During the current fiscal year, the Board's net position increased by \$10,804,106. One of the reasons for the increase was the revenues (sales taxes) increased by over \$1,944,542. Also, the ESSER monies has allowed us to save on our general fund as far as local units. The expenses increased by \$2,216,332. The reason for the expense increase was because of ACS schools opening back up and finding a way to stay open so our students could be educated in our brick and mortar buildings. Also, we started construction of our new Athens Elementary School and there were some costs incurred in fiscal year 21 of \$1,458,657. Program Revenues are 60.36% of total revenues while general revenues comprise 39.64% of total revenues.

# Athens City Board of Education

## Management's Discussion and Analysis

### For the Year Ended September 30, 2021

---

There was an increase in net investment in capital assets of \$1,852,086. The increase can also be attributed to an overall increase in fixed assets. The school systems depreciation expense and asset were less than the asset additions by \$767,927. We expect this trend to continue as we complete our Capital Plan.

Program Revenues are 60.36% of total revenues while general revenues comprise 39.64% of total revenues.

- Operating grants and contributions contribute 86.41% of program revenues and 52.16% of total revenues. The major sources of revenues in this category are state foundation program funds, and state and federal funds restricted for specific programs.
- Capital grants and contributions include state capital outlay funds.
- Charges for services include federal reimbursement for meals, student meal purchases, and local school revenues.

General revenues, primarily property taxes and sales taxes, are used to provide for the remaining expenses not covered by program revenues.

Instructional services expenses, primarily salaries and benefits for classroom teachers, are the largest expense function of the Board at 54.19%. Instructional support services make up 14.97% of the total expenses.

- Instructional services includes teacher salaries and benefits, teacher aides, substitute teachers, textbooks, depreciation of instructional buildings, professional development, and classroom instructional materials, supplies, and equipment.
- Instructional support services includes salaries and benefits for school principals, assistant principals, librarians, counselors, school secretaries, school bookkeepers, speech therapists, school nurses, and professional development expenses.
- Operation and maintenance services include utilities, security services, janitorial services, maintenance services, and depreciation of maintenance vehicles.
- Student transportation services includes bus driver salaries and benefits, bus aides, vehicle maintenance and repair expenses, vehicle fuel, depreciation of buses and fleet insurance.
- Food services includes salaries and benefits for cooks, servers, lunchroom managers, and cashiers, as well as donated and purchased food, food preparation and service supplies, kitchen and lunchroom equipment, and related depreciation.
- General administrative services include salaries and benefits for the superintendent, assistants, clerical and financial staff, and other personnel that provide system-wide support for the schools. Also included are legal expenses, liability insurance, training for board members and general administrative staff, printing costs, and depreciation of central office equipment and facilities.
- Interest and fiscal charges includes interest, but not principal payments, on long-term debt issues and other expenses related to the issuance and continuance of debt issues.
- Other expenses includes the salaries and benefits for adult and continuing education teachers, preschool teachers and aides, extended day personnel. Also included are the materials, supplies, equipment, related depreciation, and other expenses for operating programs outside of those for educating students in the K through 12 instructional programs.
- The Statement of Activities reports the cost of program services and the charges and grants offsetting those services. Table 3 condenses this statement to compare the total cost to the net cost of providing these services. The total cost of a service, less charges for the service and related grants, is the program's net cost. In other words, the net cost shows the cost of the program funded by general revenues, primarily property and sales taxes.

**Athens City Board of Education  
Management's Discussion and Analysis  
For the Year Ended September 30, 2021**

**Table 3**

	2021		2020	
	Total Cost	Net Cost	Total Cost	Net Cost
Instructional Services	\$ 29,753,431	\$ 4,881,783	\$ 29,389,551	\$ 7,459,663
Instructional Support Services	8,219,095	2,031,790	7,036,461	1,269,013
Operation and Maintenance	5,412,011	2,375,203	5,415,274	2,384,325
Student Transportation	1,527,276	196,821	1,424,689	248,875
Food Services	681,183	(43,729)	1,648,007	337,798
General and Administrative	2,333,338	1,729,100	2,125,362	1,975,749
Interest and Fiscal Charges	4,025,290	4,025,290	4,061,133	4,061,133
Other Expenses	2,955,935	49,045	1,590,750	86,093
	<u>\$ 54,907,559</u>	<u>\$ 15,245,302</u>	<u>\$ 52,691,227</u>	<u>\$ 17,822,649</u>

**Financial Analysis of the Board's Funds**

The analysis of governmental funds serves the purpose of looking at what resources came into the funds, how they were spent, and what is available for future expenditures. Did the Board generate enough revenue to pay for current obligations? What is available for spending at the end of the year? The financial performance of the Board as a whole is reflected in its governmental funds as well. At the end of the fiscal year 2021, the Board's governmental funds reported combined ending fund balances of \$31,116,642 as compared to a combined ending fund balance at the end of fiscal year 2020 of \$21,374,384. This results in a \$9,742,258 increase in the combined ending fund balances for the Board's governmental funds. The increase is a result of the increased tax revenues, the total CARES monies allocated to ACS in the amount \$11,144,605, of which \$2,141,210 was received and spent in fiscal year 21. A total of \$2,492,393 of the CARES money has been spent in fiscal year 20 and fiscal year 21. Also, the \$1,253,353 of Advancement and Technology money.

**General Fund** - The general fund is the primary operating fund of the Board. The general fund increased by \$5,284,806. The transfers out from general fund to our capital projects fund were \$5,000,000. This money is set aside to pay for our maintenance and small capital projects.

**Other Governmental Funds** – This is a combined total of several funds, of which the general capital project fund is considered a major fund. Other governmental funds include debt service funds, and special revenue funds, such as the child nutrition fund and the local school funds.

**General Fund Budgetary Highlights**

The original 2021 fiscal year budget, adopted on September 15, 2020 included only estimated revenues and expenditures known at that time. Since some of the state-funded and federally-funded programs had not yet been authorized, amendments were necessary during the year. The original budget figures are amended when revenues fall short of the original budgeted amount by 10 % for a major revenue source. Amendments were compiled for expenditures when a major program within a fund source exceeded 10% of the original budget amount. Over the course of the year, the Board revised the annual operating budget once on June 14, 2021. The amendments are summarized below.

- The budget amendment was necessary to reflect changes in beginning fund balances as of October 1, 2020. Local school budget adjustments, changes in federal fund sources to match federal applications. Budget changes to reflect approved items during fiscal year, such as approved contract services, professional services and maintenance projects. Adjustments in payroll expenses and additional board approved personnel units. Adjustments to Child Nutrition Program. Adjustments to increase amount to Career Tech Center for increased students. Adjustments to State Foundation allocation of current unit money in the amount of \$325,861. Adjustment to district and countywide tax revenues. Adjustments for revenues and expenses for CARES and ETF Advancement and Technology Funds. The comparison of the general fund original budget to the final amended budget is included in this report. The differences between the original budget and the final amended budget of the Board were as follows. Revenue appropriations increased by \$2,124,886 and corresponding expenditures increased by \$925,718.

# Athens City Board of Education

## Management's Discussion and Analysis

### For the Year Ended September 30, 2021

---

Actual revenues were more than budgetary estimates by \$6,268,953. As noted previously, a reconciliation is also included explaining the differences between actual amounts as reported on the budgetary basis and the GAAP basis.

#### **Capital Assets**

At September 30, 2021 the Board had \$95,391,571 invested in capital assets, net of accumulated depreciation. These investments include land, buildings and improvements, equipment, vehicles, and construction in progress. Increases during the year represent additions or reclassifications to those categories, while decreases represent retirements or reclassifications of assets during the year. (Comparative year data was available to present the prior year's balance of capital assets, net of accumulated depreciation.

	September 30,	
	2021	2020
Land and Land Improvements, net	\$ 4,574,907	\$ 4,525,007
Construction in Progress	1,659,689	57,293,966
Buildings, net	87,463,040	30,648,489
Vehicles, net	441,814	735,382
Equipment, net	1,111,551	1,258,227
Capital Leases, net	140,570	162,573
	<u>\$ 95,391,571</u>	<u>\$ 94,623,644</u>

The Board expended available resources to acquire capital asset additions during the year. These additions are reduced by the current year's depreciation expense of \$2,005,301. The Board purchased the recreation center from the City of Athens for the net amount of \$641,667. The board started AES site work and construction so there was \$1,458,657 in CIP for the new Athens Elementary School in 2021. Also, the AHS stadium roof project was finished in September 2021. There were several maintenance projects done at schools which included carpet in Julian Newman library and painting done at several schools, doors and locks replaced at a few schools. A boiler was replaced at Brookhill Elementary School.

#### **Current Known Facts**

Current known facts, decisions or conditions that may have a significant impact on the financial position of the Athens City Board of Education are:

**Estimated Capital Needs** – The Board has been working on a major capital plan which is the new Athens Elementary. The project will be funded by the bond money received from the sale of warrants. Athens Middle School had some upgrades done on their cafeteria and bathrooms. For information on the Capital Plan, visit the system website at [www.acs-k12.org](http://www.acs-k12.org).

#### **CONTACTING THE SCHOOL BOARD'S FINANCIAL MANAGEMENT**

This financial report is designed to provide citizens, taxpayers, investors, and creditors with a general overview of the Board's finances and to show the Board's accountability for the money it receives. If you have any questions about this report or need additional financial information, contact Beth Patton, Superintendent of Schools, 455 US Highway 31 North Athens, AL 35611, by phone (256)233-6600, or by email at [Beth.Patton@acs-k12.org](mailto:Beth.Patton@acs-k12.org) or Serena Owsley, Chief School Financial Officer by phone (256)771-7135 or by email at [Serena.Owsley@acs-k12.org](mailto:Serena.Owsley@acs-k12.org).



**Athens City Board of Education**  
**Statement of Net Position**  
**September 30, 2021**

---

	Governmental Activities
<b>Assets</b>	
Cash & Cash Equivalents	\$ 31,797,639
Receivables - Other	3,417,026
Inventories	134,775
Capital Assets	
Land & Land Improvements	4,574,907
Construction Work-in-Progress	1,659,689
Buildings	124,855,748
Machinery & Equipment	6,331,411
Accumulated Depreciation	(42,030,184)
Total Assets	<u>130,741,011</u>
<b>Deferred Outflows</b>	
Pension Related Amounts	10,851,760
OPEB Related Amounts	<u>9,593,323</u>
Total Deferred Outflows	<u>20,445,083</u>
<b>Liabilities</b>	
Accounts Payable & Accrued Liabilities	4,186,499
Other Liabilities	46,299
Noncurrent Liabilities	
Due Within One Year	1,305,842
Due in More Than One Year	<u>68,278,952</u>
Total Liabilities	<u>73,817,592</u>
<b>Deferred Inflows</b>	
Pension Related Amounts	1,340,000
OPEB Related Amounts	<u>14,609,611</u>
Total Deferred Inflows	<u>15,949,611</u>
<b>Net Position</b>	
Net Investment in Capital Assets	89,611,750
Restricted	2,320,486
Unrestricted	<u>(30,513,345)</u>
Total Net Position	<u>\$ 61,418,891</u>

The accompanying notes are an integral part of these financial statements.

**Athens City Board of Education**  
**Statement of Activities**  
**For the Year Ended September 30, 2021**

Functions/Programs	Expenses	Program Revenues			Net (Expense)
		Charges for	Operating	Capital	Revenues & Changes in
		Services	Grants & Contributions	Grants & Contributions	Net Position
					Governmental
					Activities
Governmental Activities:					
Instructional Services	\$ 29,753,431	\$ 969,075	\$ 23,439,417	\$ 463,157	\$ (4,881,782)
Instructional Support Services	8,219,095	70,041	6,117,264	-	(2,031,790)
Operation & Maintenance Services	5,412,011	117,698	2,108,162	810,948	(2,375,203)
Student Transportation Services	1,527,276	80,255	1,087,683	162,517	(196,821)
Food Services	681,183	541,592	183,321	-	43,730
General Administrative Services	2,333,338	6,247	597,991	-	(1,729,100)
Interest & Fiscal Charges	4,025,290	-	-	-	(4,025,290)
Other Expenses	2,955,935	2,168,921	737,969	-	(49,045)
Total Governmental Activities	54,907,559	3,953,829	34,271,807	1,436,622	(15,245,301)
General Revenues:					
Taxes					
Sales and Use Tax					15,563,421
Ad Valorem					3,339,430
Other Taxes					449,088
Intergovernmental Revenues - Not Restricted					1,330,582
Investment Income					20,832
Miscellaneous					5,346,054
Total General Revenues					26,049,407
Change in Net Position					10,804,106
Net Position - Beginning					50,614,785
Net Position - Ending					\$ 61,418,891

The accompanying notes are an integral part of these financial statements.

**Athens City Board of Education**  
**Balance Sheet – Governmental Funds**  
**As of September 30, 2021**

	General Fund	General Capital Projects	Nonmajor Governmental Funds	Totals
<b>Assets</b>				
Cash and Cash Equivalents	\$ 15,903,394	\$ 10,607,587	\$ 5,286,658	\$ 31,797,639
Due from Other Governmental Units	2,352,808	4,341	1,059,877	3,417,026
Inventories	-	-	134,775	134,775
Total Assets	<u>\$ 18,256,202</u>	<u>\$ 10,611,928</u>	<u>\$ 6,481,310</u>	<u>\$ 35,349,440</u>
<b>Liabilities</b>				
Accounts Payable	\$ 124,228	\$ 4,341	\$ 249,136	\$ 377,705
Unearned Revenues	-	-	46,299	46,299
Salaries and Benefits Payable	<u>3,397,147</u>	<u>-</u>	<u>411,647</u>	<u>3,808,794</u>
Total Liabilities	<u>3,521,375</u>	<u>4,341</u>	<u>707,082</u>	<u>4,232,798</u>
<b>Fund Balance</b>				
Nonspendable	-	-	134,776	134,776
Restricted	-	-	2,320,486	2,320,486
Assigned to Capital Projects	-	10,607,587	3,318,966	13,926,553
Unassigned	<u>14,734,827</u>	<u>-</u>	<u>-</u>	<u>14,734,827</u>
Total Fund Balance	<u>14,734,827</u>	<u>10,607,587</u>	<u>5,774,228</u>	<u>31,116,642</u>
Total Liabilities & Fund Balance	<u>\$ 18,256,202</u>	<u>\$ 10,611,928</u>	<u>\$ 6,481,310</u>	<u>\$ 35,349,440</u>

The accompanying notes are an integral part of these financial statements.

**Athens City Board of Education**  
**Reconciliation of the Balance Sheet of Governmental Funds**  
**to the Statement of Net Position**  
**As of September 30, 2021**

---

Total Fund Balances - Governmental Funds	\$ 31,116,642
Amounts reported for governmental activities in the statement of net position are different because:	
Capital assets used in governmental funds are not financial resources and, therefore, are not reported in the governmental funds. See Note II.	95,391,571
Deferred outflows and inflows of resources related to pensions do not relate to current financial resources and are not reported in the governmental funds.	9,511,760
Deferred outflows and inflows of resources related to OPEB do not relate to current financial resources and are not reported in the governmental funds.	(5,016,288)
Some liabilities, including long-term debt, are not due and payable in the current period and, therefore, are not reported in the governmental funds. See Note II.	<u>(69,584,794)</u>
Net Position of Governmental Activities	<u>\$ 61,418,891</u>

The accompanying notes are an integral part of these financial statements.

**Athens City Board of Education**  
**Statement of Revenues, Expenditures, and Changes in Fund Balances –**  
**Governmental Funds**  
**For the Year Ended September 30, 2021**

	General Fund	General Capital Projects	Nonmajor Governmental Funds	Totals
<b>Revenues</b>				
State Sources	\$ 29,982,084	\$ -	\$ 1,433,259	\$ 31,415,343
Federal Sources	620	-	6,567,569	6,568,189
Local Sources	24,973,360	1,330,582	1,348,216	27,652,158
Other Sources	63,220	22	11,846	75,088
Total Revenues	55,019,284	1,330,604	9,360,890	65,710,778
<b>Expenditures</b>				
Instructional Services	24,795,754	2,100	2,924,839	27,722,693
Instructional Support Services	7,261,057	-	701,592	7,962,649
Operation and Maintenance Services	4,340,449	315,395	599,611	5,255,455
Student Transportation Services	1,170,757	-	60,373	1,231,130
Food Services	-	-	653,943	653,943
General Administrative Services	1,907,862	2,701	68,534	1,979,097
Debt Service:				
Principal Retirement	246,550	-	838,605	1,085,155
Interest and Fiscal Charges	2,518,700	-	58,164	2,576,864
Other Debt Service Costs	1,370,218	-	-	1,370,218
Capital Outlay	308,170	2,955,308	36,033	3,299,511
Other Expenditures	566,390	-	2,609,262	3,175,652
Total Expenditures	44,485,907	3,275,504	8,550,956	56,312,367
Excess (Deficiency) of Revenues Over (Under) Expenditures	10,533,377	(1,944,900)	809,934	9,398,411
<b>Other Financing Sources (Uses)</b>				
Long-Term Debt Issued	-	-	755,312	755,312
Sale of Capital Assets	-	200,000	-	200,000
Transfers In	71,146	5,000,000	457,138	5,528,284
Transfers Out	(5,457,138)	-	(71,146)	(5,528,284)
Payments to Refunding Escrow Agent	-	-	(754,316)	(754,316)
Other sources	137,421	-	5,430	142,851
Total Other Financing Sources (Uses)	(5,248,571)	5,200,000	392,418	343,847
Excess of Revenues and Other Sources Over Expenditures and Other Uses	5,284,806	3,255,100	1,202,352	9,742,258
Fund Balance, Beginning	9,450,021	7,352,487	4,571,876	21,374,384
Fund Balance, Ending	\$ 14,734,827	\$ 10,607,587	\$ 5,774,228	\$ 31,116,642

The accompanying notes are an integral part of these financial statements.

**Athens City Board of Education**  
**Reconciliation of the Statement of Revenues, Expenditures, and Changes in Fund Balances**  
**of Governmental Funds to the Statement of Activities**  
**For the Year Ended September 30, 2021**

---

Net Change in Fund Balances - Total Governmental Funds \$ 9,742,258

Amounts reported for governmental activities in the statement of activities  
are different because:

Governmental funds report capital outlays as expenditures. However, in the statement of  
net position the cost of these assets is capitalized and they are depreciated over their  
estimated useful lives and reported as depreciation expense in the statement of activities.

Capital outlay is reported as an expenditure in the fund financial statements but is capitalized in the government-wide financial statements	3,299,511
Depreciation is reported in the government-wide statements	(2,005,301)
Disposals	(526,283)

Debt and leases issued provide current financial resources to governmental funds, but  
issuing these obligations increases long-term liabilities in the statement of net position  
Repayment of principal is an expenditure in the governmental funds, but the repayment  
reduces long-term liabilities in the statement of net position.

Debt issued	(755,312)
Principal repaid and payments to refunding escrow agent	1,839,471

Some expenses in the statement of activities do not require the use of current financial  
resources and, therefore, are not reported as expenditures in the governmental funds.

Compensated absences	44,855
Other	61,368
Post-employment benefits	1,255,304
Net pension liability	(2,151,765)

Change in Net Position of Governmental Activities	\$ 10,804,106
---	---------------

The accompanying notes are an integral part of these financial statements.

**Athens City Board of Education**  
**Statement of Fiduciary Net Position**  
**September 30, 2021**

---

	Private- Purpose Trust	Custodial Funds
<b>Assets</b>		
Cash and Cash Equivalents	\$ -	\$ 570,010
Investments	22,840	19,859
Receivables	-	1,677
	<hr/>	<hr/>
<b>Total Assets</b>	<b>22,840</b>	<b>591,546</b>
	<hr/>	<hr/>
<b>Liabilities</b>		
Accounts Payable	-	549
Salaries and Benefits Payable	-	9,864
	<hr/>	<hr/>
<b>Total Liabilities</b>	<b>-</b>	<b>10,413</b>
	<hr/>	<hr/>
<b>Net Position</b>	<b>\$ 22,840</b>	<b>\$ 581,133</b>
	<hr/>	<hr/>

The accompanying notes are an integral part of these financial statements.

**Athens City Board of Education**  
**Statement of Changes in Fiduciary Net Position**  
**For the Year Ended September 30, 2021**

---

	Private- Purpose Trust	Custodial Funds
<b>Additions</b>		
Fundraisers	\$ -	\$ 303,955
Dues & Fees	-	57,793
Concessions	-	34,610
Grants & Contributions	-	42,833
Other	-	104,906
<b>Total Additions</b>	-	544,097
<b>Deductions</b>		
Materials & Supplies	-	174,591
Transportation & Food	-	32,627
Other	234	284,951
<b>Total Deductions</b>	234	492,169
<b>Change in Net Position</b>	(234)	51,928
<b>Net Position - Beginning</b>	23,074	529,205
<b>Net Position - Ending</b>	\$ 22,840	\$ 581,133

The accompanying notes are an integral part of these financial statements.



# **Athens City Board of Education**

## **Notes to Financial Statements**

### **As of and for the Year Ended September 30, 2021**

---

#### **NOTE I – SUMMARY OF SIGNIFICANT ACCOUNTING POLICIES**

The financial statements of the Athens City Board of Education (“ACBOE” or the “Board”), a component unit of the City of Athens, Alabama, have been prepared in conformity with accounting principles generally accepted in the United States of America (GAAP) as applied to governmental units. The Governmental Accounting Standards Board (GASB) is the standard-setting body for establishing governmental accounting and financial reporting principles. The more significant of the Board’s accounting policies are described below.

#### **A. Reporting Entity**

The ACBOE is a legally separate organization from the City of Athens, Alabama (the “City”). The ACBOE is composed of seven members appointed by the City Council. The purpose of the ACBOE is to operate elementary, intermediate, middle, and high school for students residing in the City. The City Council provides fiscal guidance because it levies taxes for the ACBOE’s operations and issues debt for its school construction projects. Based on these facts, the City reports the ACBOE as a discretely presented component unit. The information presented is for the fiscal year ended September 30, 2021. Separately issued financial statements of the Athens City Board of Education may be obtained from the ACBOE’s office.

#### **B. Government-Wide and Fund Financial Statements**

##### ***Government-Wide Financial Statements***

The statement of net position and statement of activities display information about the reporting government as a whole. They include all funds of the reporting entity except for fiduciary funds. The statements distinguish between governmental and business-type activities. Governmental activities generally are financed through taxes, intergovernmental revenues, and other nonexchange revenues. Business-type activities are financed in whole or in part by fees charged to external parties for goods or services. Likewise, the primary government is reported separately from certain legally separate component units for which the primary government is financially accountable.

The statement of activities demonstrates the degree to which the direct expenses of a given function or segments are offset by program revenues. Direct expenses are those that are clearly identifiable with a specific function or segment. The Board does not allocate indirect expenses to functions in the statement of activities. Program revenues include 1) charges to customers or applicants who purchase, use or directly benefit from goods, services, or privileges provided by a given function or segment, and 2) grants and contributions that are restricted to meeting the operational or capital requirements of a particular function or segment. Taxes and other items not included among program revenues are reported as general revenues. Internally dedicated resources are reported as general revenues rather than as program revenues.

##### ***Fund Financial Statements***

Financial statements of the reporting entity are organized into funds, each of which is considered to be a separate accounting entity. Each fund is accounted for by providing a separate set of self-balancing accounts, which constitute its assets, deferred outflows of resources, liabilities, deferred inflows of resources, net position/fund balance, revenues, and expenditures/expenses.

Separate financial statements are provided for governmental funds and fiduciary funds, even though they are excluded from the government-wide financial statements. Major individual governmental funds and fiduciary funds are reported as separate columns in the fund financial statements.

Funds are organized as major funds or nonmajor funds within the governmental and fiduciary statements. An emphasis is placed on major funds within the governmental category. A fund is considered major if it is the primary operating fund of the Board or meets the following criteria:

# Athens City Board of Education

## Notes to Financial Statements

### As of and for the Year Ended September 30, 2021

---

- a. Total assets, deferred outflows of resources, liabilities, deferred inflows of resources, revenues, or expenditures/expenses of that individual governmental or enterprise fund are at least 10% of the corresponding total for all funds of that category or type, and
- b. The same element of the individual governmental fund or fiduciary fund that met the 10% test is at least 5% of the corresponding total for all governmental and enterprise funds combined.
- c. In addition, any other governmental or fiduciary fund that the Board believes is particularly important to financial statement users may be reported as a major fund.

The Board reports the following major governmental funds:

#### *Major Governmental Funds*

General Fund – accounts for the Board’s primary operating activities. It is used to account for all financial resources except those required to be accounted for in another fund.

General Capital Projects Fund – accounts for financial resources to be used for the acquisition or construction of major capital facilities.

The Board reports the following nonmajor governmental and fiduciary funds:

#### *Nonmajor Governmental Funds*

Special Revenue Funds – used to account for the proceeds of specific revenue sources that are legally restricted or committed to expenditures for specified purposes.

IDEA  
Pre-K  
Public School  
ROTC  
Title I  
Title II  
Title III  
Title IV  
USDA  
Vocational  
Summer Food Service  
CARES Act  
SSIP  
ARPA  
Special Ed Assistance

Debt Service Funds – accounts for resources that are restricted, committed, or assigned to expenditure for the payment of general long-term debt principal, interest, and related costs other than enterprise debt.

Debt Service

Capital Projects Funds – used to account for financial resources that are restricted, committed, or assigned to expenditures for capital outlays, including the acquisition or construction of equipment and/or major capital facilities and other capital assets.

PSCA Capital Projects  
Public School Capital Projects

# Athens City Board of Education

## Notes to Financial Statements

### As of and for the Year Ended September 30, 2021

---

#### *Nonmajor Fiduciary Funds*

Fiduciary Funds –used to report assets held in a trustee or custodial capacity for others and therefore cannot be used to support the Board’s programs.

Custodial  
Private-Purpose Trust

#### **C. Measurement Focus, Basis of Accounting, and Financial Statement Presentation**

##### ***Government-Wide Financial Statements***

The government-wide statement of net position and statement of activities are reported using the economic resources measurement focus and the accrual basis of accounting. Under the accrual basis of accounting, revenues are recognized when earned and expenses are recorded when the liability is incurred or economic asset used. Revenues, expenses, gains, losses, assets, and liabilities resulting from exchange and exchange-like transactions are recognized when the exchange takes place. Property taxes are recognized as revenues in the year for which they are levied. Grants and similar items are recognized as revenue as soon as all eligibility requirements imposed by the provider are met. Special assessments are recorded as revenue when earned. Unbilled receivables are recorded as revenues when services are provided.

As a general rule, the effect of interfund activity has been eliminated from the government-wide financial statements.

##### ***Fund Financial Statements***

Governmental fund financial statements are reported using the current financial resources measurement focus and the modified accrual basis of accounting. Revenues are recorded when they are both measurable and available. Available means collectible within the current period or soon enough thereafter to be used to pay liabilities of the current period. For this purpose, the Board considers revenues to be available if they are collected within 30 days of the end of the current fiscal period. Expenditures are recorded when the related fund liability is incurred, except for unmatured interest on long-term debt, claims, judgments, compensated absences, and pension expenditures, which are recorded as a fund liability when expected to be paid with expendable available financial resources.

Intergovernmental aids and grants are recognized as revenues in the period the Board is entitled to the resources and the amounts are available. Amounts owed to the Board which are not available are recorded as receivables and unavailable revenues. Amounts received before eligibility requirements (excluding time requirements) are met and recorded as liabilities. Amounts received in advance of meeting time requirements are recorded as deferred inflows.

Revenues susceptible to accrual include taxes, public charges for services, and interest. Other general revenues are recognized when received in cash or when measurable and available under the criteria described above.

Public school funds and other funds under the control of school principals use the cash basis of accounting during the year. However, these funds have been restated to the modified accrual basis of accounting in these financial statements.

##### ***All Financial Statements***

The preparation of financial statements in conformity with generally accepted accounting principles requires management to make estimates and assumptions that affect the reported amounts of assets, deferred outflows of resources, liabilities, deferred inflows of resources, and disclosure of contingent assets and liabilities at the date of the financial statements and the reported amounts of revenues and expenditures/expenses during the reporting period. Actual results could differ from those estimates.

**Athens City Board of Education**  
**Notes to Financial Statements**  
**As of and for the Year Ended September 30, 2021**

---

**D. Assets, Deferred Outflows of Resources, Deferred Inflows of Resources, and Net Position or Equity**

**1. Deposits and Investments**

Cash and cash equivalents may include cash on hand, demand deposits, money market, and savings accounts, and short-term investments with original maturities of three months or less, excluding restricted funds, which are carried at fair value (level 1).

***Credit Risk***

The Board has no formal policy on managing credit risk. However, the State Attorney General has issued a legal opinion that boards of education may not put public funds at risk by investing in companies not insured by the federal government. Investments consist of certificates of deposit with short-term maturities and are stated at fair value.

***Interest Rate Risk***

Interest rate risk is the risk that changes in market interest rates will adversely affect the fair value of an investment. Generally, the longer the maturity of an investment, the greater the sensitivity of its fair value to changes in market interest rates. The Board does not have a formal investment policy that limits investment maturities as a means of managing its exposure to interest rate risk.

Investments are stated at fair value, which is the amount at which an investment could be exchanged in a current transaction between willing parties. Fair values are based on quoted market prices. No investments are reported at amortized cost. Adjustments necessary to record investments at fair value are recorded in the operating statement as increases or decreases in investment income.

See Note IV.A. for further information.

**2. Receivables**

***Due from Other Governmental Units***

Receivables due from other governments include amounts due from grantors for grants issued for specific programs and local taxes.

***Allowances***

The Limestone County Revenue Commissioner, the City of Athens, and the State of Alabama remit 100% of the taxes collected and paid to the Board. Because of this, no provision for uncollectible taxes receivable has been made.

***Due To/From Advances***

During the course of operations, transactions occur between individual funds that may result in amounts owed between funds. Short-term interfund loans are reported as "due to and from other funds." Long-term interfund loans (noncurrent portion) are reported as "advances from and to other funds." Interfund receivables and payables between funds within governmental activities are eliminated in the statement of net position. Any residual balances outstanding between the governmental activities and business-type activities are reported in the government-wide financial statements as "internal balances".

**Athens City Board of Education**  
**Notes to Financial Statements**  
**As of and for the Year Ended September 30, 2021**

---

**3. Inventories and Prepaid Items**

Inventories are valued at cost, which approximates net realizable value, using the first-in, first-out (FIFO) method. The cost of governmental fund-type inventories are recorded as expenditures when purchased except commodities donated by the federal government that are expensed when consumed. GAAP require only material balances of inventories accounted for using the purchases method to be reported as an asset in the appropriate governmental fund.

Prepaid items such as insurance premiums and rent are recorded as expenditures in governmental funds when paid. In the government-wide financial statements, inventories and prepaid items are recorded on an accrual basis using the consumption method. Expenses reflect the amount of materials and supplies consumed and the amount of prepaid items applicable to the current period.

**4. Restricted Assets**

Mandatory segregations of assets are presented as restricted assets. Such segregations are required by bond agreements and other external parties. Current liabilities payable from these restricted assets are so classified. The excess of restricted assets over current liabilities payable from restricted assets will be used first for retirement of related long-term debt. The remainder, if generated from earnings, is shown as restricted net position.

**5. Capital Assets**

***Government-Wide Financial Statements***

Capital assets, which include property, plant and equipment, are reported in the government-wide financial statements. Capitalization thresholds (the dollar values above which asset acquisitions are added to the capital asset accounts) and the estimated useful lives of capital assets reported in the government-wide statements are as follows:

Asset Class	Capitalization Threshold	Estimated Useful Life
Land Improvements – Exhaustible	\$ 50,000	20 years
Buildings	\$ 50,000	50 years
Building Improvements	\$ 50,000	7-30 years
Equipment	\$ 15,000	5-20 years
Equipment Under Capital Lease	\$ 15,000	5-20 years
Vehicles	\$ 15,000	8-10 years

(The capitalization threshold for Land, Construction in Progress, and Inexhaustible Land Improvements is \$1 or more. However, these capital assets are not depreciated.)

All capital assets are valued at historical cost or estimated historical cost if actual amounts are unavailable. Donated capital assets are recorded at their estimated fair value at the date of donation.

Additions to and replacements of capital assets of business-type activities are recorded at original cost, which includes material, labor, overhead, and an allowance for the cost of funds used during construction when significant. While projects are in progress, costs are accumulated in the construction work-in-progress account. When projects are completed, the total cost is transferred to the appropriate capital asset accounts. Additions, improvements, and expenditures for repairs and maintenance that significantly add to the productivity or extend the economic life of the assets are capitalized. Other expenditures for repairs and maintenance are charged to operations.

**Athens City Board of Education**  
**Notes to Financial Statements**  
**As of and for the Year Ended September 30, 2021**

---

Depreciation of all exhaustible capital assets is recorded as an allocated expense in the statement of activities, with accumulated depreciation reflected in the statement of net position. Depreciation is provided over the assets' estimated useful lives using the straight-line method of depreciation.

***Fund Financial Statements***

In the fund financial statements, capital assets used in governmental fund operations are accounted for as capital outlay expenditures of the governmental fund upon acquisition.

***6. Deferred Outflows of Resources***

A deferred outflow of resources represents a consumption of net position/fund balance that applies to a future period and will not be recognized as an outflow of resources (expense/expenditure) until that future time.

A deferred charge on refunding arises from the advance refunding of debt. The difference between the costs of the securities placed in trust for future payments of the refunded debt and the net carrying value of that debt is deferred and amortized as a component of interest expense over the shorter of the term of the refunding issue or the original term of the refunded debt. The unamortized amount is reported as a deferred outflow of resources in the government-wide financial statements.

***7. Compensated Absences***

Professional and support employees earn non-vesting sick leave at the rate of one day per month worked. Employees may accumulate a maximum of 225 sick leave days. Employees may use up to 225 days of their accrued sick leave as membership service in determining the total years of creditable service in the teachers' retirement system, with no additional cost to the Board.

Because employees do not receive compensation for unused sick leave at termination no liability is recorded on the financial statements. Professional and support personnel with up to four years of service are provided three days of personal leave per year with pay. Employees with four years to ten years of service receive four days and employees with ten years or more; receive five days of personal leave with pay. The State provides funding, at the substitute rate, for up to 2 days of personal leave per employee per year. As of June 30, professional personnel are paid \$50 a day and support personnel \$35 for up to five days of unused personal leave which was accrued in the previous twelve month period. Personal leave is accrued in full as of the employee contract date for the upcoming contract period. Professional and support personnel may convert unused, unreimbursed personal leave to sick leave at the end of the scholastic year. Because unused personal leave cannot be carried over to succeeding years, the accrued liability for unpaid leave as of September 30, 2021 includes all unused personal leave for the period July 1, 2020 through September 30, 2021.

Twelve month employees are allowed ten days of vacation per year with pay. Because unused vacation leave cannot be carried over to succeeding years, the accrued liability for unpaid leave as of September 30, 2021 includes all unused personal leave for the period July 1, 2020 through September 30, 2021.

***8. Long-Term Obligations***

All long-term obligations to be repaid from governmental resources are reported as liabilities in the government-wide statements. The long-term obligations consist primarily of notes and bonds payable, leases payable, compensated absences, other postemployment benefits, and net pension liability. Long-term obligations for governmental funds are not reported as liabilities in the fund financial statements. The face value of debts (plus any premiums) is reported as other financing sources and payments of principal and interest are reported as expenditures. For the government-wide statements, bond premiums and discounts are amortized over the life of the issue. The balance at year end for premiums/discounts is shown as an increase or decrease in the liability section of the statement of net position.

**Athens City Board of Education**  
**Notes to Financial Statements**  
**As of and for the Year Ended September 30, 2021**

---

**9. Deferred Inflows of Resources**

A deferred inflow of resources represents an acquisition of net position fund balance that applies to a future period, and therefore, will not be recognized as an inflow of resources (revenue) until that future time.

**10. Equity Classifications**

**Government-Wide Financial Statements**

Equity is classified as net position and displayed in three components:

- a. Net investment in capital assets – Consists of capital assets including restricted capital assets, net of accumulated depreciation and reduced by the outstanding balances (excluding unspent debt proceeds) of any bonds, mortgages, notes, or other borrowings that are attributable to the acquisition, construction, or improvement of those assets.
- b. Restricted net position – Consists of net position with constraints placed on their use either by 1) external groups such as creditors, grantors, contributors, or laws or regulations of other governments or, 2) law through constitutional provisions or enabling legislation.
- c. Unrestricted net position – All other net position that does not meet the definition of “restricted” or “net investment in capital assets.”

When both restricted and unrestricted resources are available for use, it is the Board’s policy to use restricted resources first, then unrestricted resources as they are needed.

**Fund Financial Statements**

Governmental fund balances are displayed as follows:

- a. Nonspendable - Includes fund balance amounts that cannot be spent either because they are not in spendable form or because legal or contractual requirements require them to be maintained intact.
- b. Restricted - Consists of fund balances with constraints placed on their use either by 1) external groups such as creditors, grantors, contributors, or laws or regulations of other governments or 2) law through constitutional provisions or enabling legislation.
- c. Committed - Includes fund balance amounts that are constrained for specific purposes that are internally imposed by the government through formal action of the highest level of decision making authority. Fund balance amounts are committed through a formal action (resolution) of the Board. This formal action must occur prior to the end of the reporting period, but the amount of the commitment, which will be subject to the constraints, may be determined in the subsequent period. Any changes to the constraints imposed require the same formal action of the Board that originally created the commitment.
- d. Assigned - Includes spendable fund balance amounts that are intended to be used for specific purposes that do not meet the criteria to be classified as restricted or committed. The Board has adopted a financial policy authorizing the CFSO to assign amounts for a specific purpose. Assignments may take place after the end of the reporting period.
- e. Unassigned - Includes residual positive fund balance within the general fund which has not been classified within the other above mentioned categories. Unassigned fund balance may also include negative balances for any governmental fund if expenditures exceed amounts restricted, committed, or assigned for those purposes.

**Athens City Board of Education**  
**Notes to Financial Statements**  
**As of and for the Year Ended September 30, 2021**

---

The Board considers restricted amounts to be spent first when both restricted and unrestricted fund balance is available unless there are legal documents/contracts that prohibit doing this, such as in grant agreements requiring dollar for dollar spending. Additionally, the Board would first use committed, then assigned and lastly unassigned amounts of unrestricted fund balance when expenditures are made.

**NOTE II – RECONCILIATION OF GOVERNMENT-WIDE AND FUND FINANCIAL STATEMENTS**

**A. Explanation of Certain Differences Between the Governmental Fund Balance Sheet and the Statement of Net Position**

The governmental fund balance sheet includes a reconciliation between fund balance – total governmental funds and net position – governmental activities as reported in the government-wide statement of net position.

Capital assets used in governmental funds are not financial resources and, therefore, are not reported in the governmental funds.

Land & Land Improvements	\$ 4,574,907
Construction Work-in-Progress	1,659,689
Buildings	124,855,748
Machinery & Equipment	6,331,411
Less: Accumulated Depreciation	(42,030,184)
Combined Adjustment for Capital Assets	<u>\$ 95,391,571</u>

Some assets are not available to provide resources in the current period and, therefore, are not reported in the funds.

Some liabilities applicable to the Board's governmental activities are not due and payable in the current period, and accordingly, are not reported as fund liabilities. Interest on long-term debt is not accrued in governmental funds, but rather is recognized as an expenditure when due. All liabilities—both current and long-term—are reported in the statement of net position.

Bonds & Notes Payable	\$ 2,647,124
Capital Leases	3,132,697
Net Pension Liability	42,269,000
Compensated Absences	196,207
Net OPEB Liability	21,339,766
Combined Adjustment for Liabilities	<u>\$ 69,584,794</u>

**NOTE III – STEWARDSHIP, COMPLIANCE, AND ACCOUNTABILITY**

**A. Budgetary Information**

Annual budgets are adopted for all governmental funds. All annual appropriations lapse at fiscal year-end. State law requires Alabama school boards to prepare and submit to the State Superintendent of Education the annual budget adopted by the local board of education. The city superintendent of education or Board cannot approve any budget for operations of the school system for any fiscal year that shows expenditures in excess of income estimated to be available plus any balances on hand. The superintendent with the approval of the board has the authority to make changes within the approved budget provided that a deficit is not incurred by such changes. The superintendent may approve amendments to program budgets without board approval.



# Athens City Board of Education

## Notes to Financial Statements

### As of and for the Year Ended September 30, 2021

---

#### B. Excess Expenditures and Other Financing Uses Over Appropriations

Only the General Capital Projects fund expenditures exceeded appropriations by more than 10% for the year ended September 30, 2021.

#### NOTE IV – DETAILED NOTES ON ALL FUNDS

##### A. Deposits and Investments

The Board maintains both individual accounts and a cash pool that is available for use by specific funds. Each fund type's portion in this pool is included on the statement of net position and balance sheet in cash and cash equivalents. In addition, investments are separately held in the fiduciary funds. The Board's cash at year end was comprised of the following:

	Fair Value	Bank & Investment Balance	Associated Risks
Demand Deposits	\$ 31,797,099	\$ 32,303,227	N/A
Petty Cash & Returned Checks	540	-	N/A
Total Cash & Cash Equivalents	<u>\$ 31,797,639</u>	<u>\$ 32,303,227</u>	
Reconciliation to Financial Statements			
Per Statement of Net Position	31,797,639		
Total Cash & Cash Equivalents	<u>\$ 31,797,639</u>		

*\*Custodial Credit, Interest Rate, Investments Sensitive to Interest Rate Changes*

The Board's deposits at September 30, 2021 were held by financial institutions that participate in the State of Alabama's Security of Alabama Funds Enhancement (SAFE) Program. The SAFE Program was established by the Alabama Legislature and is governed by the provisions contained in the **Code of Alabama 1975**, Sections 41-14A-1 through 41-14A-14. Under the SAFE Program all public funds are protected through a collateral pool administered by the Alabama State Treasurer's Office.

Under this program, financial institutions holding deposits of public funds must pledge securities as collateral against those deposits. In the event of failure of a financial institution, securities pledged by that financial institution would be liquidated by the State Treasurer to replace the public deposits not covered by the Federal Depository Insurance Corporation. If the securities pledged failed to produce adequate funds, every institution participating in the pool would share the liability for the remaining balance.

##### **Custodial Credit Risk**

Deposits – Custodial credit risk is the risk that in the event of a financial institution failure, some or all of the Board's deposits may not be returned. All of the Board's deposits are protected by the SAFE Program.

Investments – For an investment, custodial credit risk is the risk that, in the event of the failure of the counterparty, the Board will not be able to recover the value of its investments or collateral securities that are in the possession of an outside party. As of September 30, 2021, the Board's only investments were held in fiduciary funds.

##### **Credit Risk**

Credit risk is the risk that an issuer or other counterparty to an investment will not fulfill its obligations. As of September 30, 2021, the Board's only investments were held in fiduciary funds.

**Athens City Board of Education**  
**Notes to Financial Statements**  
**As of and for the Year Ended September 30, 2021**

---

***Concentration of Credit Risk***

Concentration of credit risk is the risk of loss attributed to the magnitude of a government's investment in a single issuer. The Board does not have a formal investment policy that places limits on the amount the Board may invest in any one issuer.

***Interest Rate Risk***

Interest rate risk is the risk that changes in interest rates will adversely affect the fair value of an investment. Investments with longer maturities are more sensitive to interest rate changes.

As of September 30, 2021, the Board's only investments were held in fiduciary funds.

***Fair Value***

The Board's deposits and investments are recorded at fair value. Fair value is defined as the price that would be received to sell an asset or paid to transfer a liability between buyers and sellers at the measurement date.

The Board categorizes its fair value measurements within the fair value hierarchy established by generally accepted accounting principles. The hierarchy is based on the valuation inputs used to measure fair value of the assets. Level 1 inputs are quoted prices in an active market for identical assets; Level 2 inputs are significant other observable inputs; and Level 3 inputs are significant unobservable inputs.

**B. Receivables**

All receivables for the Board's individual major fund and nonmajor funds in the aggregate are expected to be collected within one year.

**C. Restricted Assets**

Cash and investments that must be used for restricted purposes are reported as "Restricted Assets" in the government-wide statement of net position and fund financial statements balance sheets.

**Athens City Board of Education**  
**Notes to Financial Statements**  
**As of and for the Year Ended September 30, 2021**

---

**D. Capital Assets**

Capital asset activity for the fiscal year was as follows:

<b>Governmental Activities</b>	<b>Beginning Balance</b>	<b>Additions</b>	<b>Deletions</b>	<b>Transfers</b>	<b>Ending Balance</b>
<b>Nondepreciable Assets:</b>					
Land	\$ 4,525,007	\$ 49,900	\$ -	\$ -	\$ 4,574,907
Construction-in-Progress	57,293,966	1,553,634	-	(57,187,911)	1,659,689
<b>Depreciable Assets:</b>					
Buildings	53,435,580	1,548,412	(2,631,417)	57,187,911	109,540,486
Building Improvements	15,214,174	101,088	-	-	15,315,262
Vehicles	2,833,569	-	-	-	2,833,569
Equipment	3,451,365	46,477	-	-	3,497,842
<b>Total Capital Assets</b>	<b>136,753,661</b>	<b>3,299,511</b>	<b>(2,631,417)</b>	<b>-</b>	<b>137,421,755</b>
<b>Accumulated Depreciation:</b>					
Buildings	32,276,178	1,005,444	(2,105,134)	-	31,176,488
Building Improvements	5,725,086	491,134	-	-	6,216,220
Vehicles	1,935,615	315,570	-	-	2,251,185
Equipment	2,193,138	193,153	-	-	2,386,291
<b>Total Accumulated Depreciation</b>	<b>42,130,017</b>	<b>2,005,301</b>	<b>(2,105,134)</b>	<b>-</b>	<b>42,030,184</b>
<b>Net Capital Assets</b>	<b>\$ 94,623,644</b>	<b>\$ 1,294,210</b>	<b>\$ (526,283)</b>	<b>\$ -</b>	<b>\$ 95,391,571</b>

Depreciation expenses were charged to functions as follows:

General Administration	\$ 8,049
Instructional Services	1,372,575
Instruction Support Services	14,958
Operation & Maintenance Services	236,891
Student Transportation Services	307,716
Food Services	65,112
<b>Total Depreciation Expense</b>	<b>\$ 2,005,301</b>

**E. Interfund Receivables/Payables & Transfers**

***Interfund Receivables/Payables***

At September 30, 2021, there were no interfund receivables and payables in the balance sheet.

**Athens City Board of Education**  
**Notes to Financial Statements**  
**As of and for the Year Ended September 30, 2021**

**Transfers**

The following is a schedule of interfund transfers:

Fund Transferred To	Fund Transferred From	Amount	Principal Purpose
General Capital Projects	General	\$ 5,000,000	Project Costs
General	Nonmajor Special Revenue Funds	71,146	Transfer Revenue
Total Major Funds		<u>5,071,146</u>	
Nonmajor Special Revenue Funds	General	307,138	Transfer Revenue
Nonmajor Debt Service Funds	General	150,000	Debt Service
Total Nonmajor Funds		<u>457,138</u>	
Total - Fund Financial Statements		5,528,284	
Less: Fund Eliminations		<u>(5,528,284)</u>	
Total		<u>\$ -</u>	

Generally, transfers are used to (1) move revenues from the fund that collects them to the fund that the budget requires to expend them, (2) move receipts restricted to debt service from the funds collecting the receipts to the debt service fund, and (3) use unrestricted revenues collected in the general fund to finance various programs accounted for in other funds in accordance with budgetary authorizations.

**F. Long-Term Obligations**

Long-term obligations activity for the year end was as follows:

	Beginning Balance	Increases	Decreases	Ending Balance	Amounts Due Due Within One Year
<b>Governmental Activities</b>					
Bonds & Notes Payable:					
General Obligation Debt	\$ 1,230,116	\$ 755,312	\$ 838,304	\$ 1,147,124	\$ 165,251
Direct Placement Debt	1,500,000	-	-	1,500,000	-
Other Liabilities:					
Compensated Absences	241,062	-	44,855	196,207	196,207
Capital Leases	4,133,864	-	1,001,167	3,132,697	944,384
Net Pension Liability	35,837,000	6,432,000	-	42,269,000	-
Net OPEB Liability	13,998,365	7,341,401	-	21,339,766	-
<b>Total</b>	<u>\$ 56,940,407</u>	<u>\$ 14,528,713</u>	<u>\$ 1,884,326</u>	<u>\$ 69,584,794</u>	<u>\$ 1,305,842</u>

The ACBOE has pledged future general revenues to repay general obligation debt issued in 2004 and 2020. Proceeds from the debt provided financing for various projects of the ACBOE. The bonds are payable solely from general revenues and are payable through 2033. Total principal remaining to be paid on the bonds is \$1,147,124, shown as follows:

**Athens City Board of Education**  
**Notes to Financial Statements**  
**As of and for the Year Ended September 30, 2021**

	Date of Issue	Due Date	Interest Rates	Original Indebtedness	Principal Balance 9/30/2021
General Obligation Debt:					
General Obligation - PSCA	3/18/2004	3/18/2025	3.35%	\$ 1,277,172	\$ 134,420
General Obligation - BRAC	10/22/2020	6/1/2033	3.00-5.00%	1,091,879	1,012,704
Total General Obligation Debt					<u>\$ 1,147,124</u>

Debt service requirements to maturity on general obligation debt are as follows:

Years	Principal	Interest
2022	\$ 165,251	\$ 26,752
2023	102,673	20,701
2024	105,870	17,678
2025	84,604	14,955
2026	82,351	12,403
2027-2031	426,773	43,754
2032-2036	179,602	5,962
Totals	<u>\$ 1,147,124</u>	<u>\$ 142,205</u>

The City has issued various general obligation bonds and warrants for the construction of facilities for the ACBOE. The City is obligated for repayment of the general obligation debt and, therefore, has included in their statement of net position.

The ACBOE also has outstanding bonds from a direct placement in 2018 related to governmental activities in the amount of \$1,500,000 for various projects of the ACBOE. The bonds are payable solely from general revenues, with one payment occurring on 8/31/2028. Total principal remaining to be paid on the bonds is \$1,500,000, shown as follows:

	Date of Issue	Due Date	Interest Rates	Original Indebtedness	Principal Balance 9/30/2021
Direct Placement Debt:					
Qualified Zone Academy Bond	9/30/2018	8/31/2028	0.00%	\$ 1,500,000	\$ 1,500,000
Total Direct Placement Debt:					<u>\$ 1,500,000</u>

**Other Debt Information**

Estimated payments of compensated absences are not included in the debt service requirement schedules. The compensated absences and other postemployment benefit liability attributable to governmental activities will be liquidated primarily by the general fund.

**G. Lease Disclosures**

During the year ended September 30, 2017, the Board entered into a Master Lease Purchase Agreement with Regions Capital Advantage, Inc. for the purchase of 17 new buses. The Agreement is for a period of ten years of one hundred twenty consecutive months consisting of an initial term of April 25, 2017 through September 30, 2017, followed by nine consecutive renewal terms of one year each ending on September 30, 2027. Principal and interest will be paid monthly and the interest components of the payments will be calculated at the rate of 2.55% per annum.

During the year ended September 30, 2019, the Board entered into a Master Lease Purchase Agreement with Regions Capital Advantage, Inc. for the purchase of 2 new buses. The Agreement is for a period of ten years of one hundred twenty consecutive months consisting of an initial term of July 30, 2019 through September 30, 2019, followed by ten consecutive

**Athens City Board of Education**  
**Notes to Financial Statements**  
**As of and for the Year Ended September 30, 2021**

---

renewal terms of one year each ending on September 30, 2029. Principal and interest will be paid monthly and the interest components of the payments will be calculated at the rate of 3.22% per annum.

During the year ended September 30, 2019, the Board entered into a Master Lease Purchase Agreement with Apple, Inc. for the purchase of a large number of Apple products. The Agreement is for a period of four years of forty-eight consecutive months commencing on July 10, 2019. Principal and interest will be paid monthly and the interest components of the payments will be calculated at the rate of 3.19% per annum. The Board determined that the individual products did not meet the asset capitalization threshold and were therefore not capitalized.

During the year ended September 30, 2020, the Board entered into a Master Lease Purchase Agreement with Apple, Inc. for the purchase of a large number of Apple products. The Agreement is for a period of four years of forty-eight consecutive months commencing on July 10, 2020. Principal will be paid monthly (the interest component of the payment was calculated at the rate of 0.00% per annum). The Board determined that the individual products did not meet the asset capitalization threshold and were therefore not capitalized.

Capital lease assets are included in capital assets as follows:

Vehicles	\$ 1,573,833
Less: Accumulated Depreciation	<u>(1,225,264)</u>
Total	<u>\$ 348,569</u>

The following is a schedule of the future minimum lease payments under capital leases, and the present value of the net minimum lease payments at September 30, 2021:

2022	\$ 974,831
2023	974,829
2024	774,324
2025	177,007
2026 and Thereafter	<u>320,036</u>
Total Minimum Lease Payments	3,221,027
Less: Amount Representing Interest	<u>88,330</u>
Present Value of Future Minimum Lease Payments	<u>\$ 3,132,697</u>

**Athens City Board of Education**  
**Notes to Financial Statements**  
**As of and for the Year Ended September 30, 2021**

---

**H. Governmental Activities Net Position/Fund Balances**

Governmental activities net position reported on the government wide statement of net position includes the following:

***Governmental Activities***

Net Investment in Capital Assets	
Capital Assets	\$ 137,421,755
Less: Accumulated Depreciation	(42,030,184)
Less: Related Debt	(5,779,821)
Net Investment in Capital Assets	<u>89,611,750</u>
Restricted for:	
Special Revenue Funds	<u>2,320,486</u>
Total Restricted	<u>2,320,486</u>
Unrestricted	<u>(30,513,345)</u>
Total Governmental Activities Net Position	<u>\$ 61,418,891</u>

	General Fund	General Capital Projects	Nonmajor Governmental Funds	Totals
Nonspendable				
Inventory	\$ -	\$ -	\$ 134,776	\$ 134,776
Restricted	-	-	2,320,486	2,320,486
Assigned to:				
Capital Projects	-	10,607,587	3,318,966	13,926,553
Unassigned	<u>14,734,827</u>	<u>-</u>	<u>-</u>	<u>14,734,827</u>
Total Fund Balance	<u>\$14,734,827</u>	<u>\$ 10,607,587</u>	<u>\$ 5,774,228</u>	<u>\$ 31,116,642</u>

Governmental fund balances reported on the fund financial statements at September 30, 2021 include the following:

**NOTE V – OTHER INFORMATION**

**A. Teachers' Retirement System**

***Summary of Significant Accounting Policies***

***Pensions***

The Teachers' Retirement System of Alabama's (the Plan or TRS) financial statements are prepared using the economic resources measurement focus and accrual basis of accounting. Contributions are recognized as revenues when earned, pursuant to Plan requirements. Benefits and refunds are recognized when due and payable in accordance with the terms of the Plan.

# **Athens City Board of Education**

## **Notes to Financial Statements**

### **As of and for the Year Ended September 30, 2021**

---

Expenses are recognized when the corresponding liability is incurred, regardless of when the payment is made. Investments are reported at fair value. Financial statements are prepared in accordance with the requirements of the Governmental Accounting Standards Board (GASB). Under these requirements, the Plan is considered a component unit of the State of Alabama and is included in the State's Annual Comprehensive Financial Report.

#### ***Plan Description***

The TRS, a cost-sharing multiple-employer public employee retirement plan, was established as of September 15, 1939, pursuant to the *Code of Alabama 1975, Title 16, Chapter 25* (Act 419 of the Legislature of 1939) for the purpose of providing retirement allowances and other specified benefits for qualified persons employed by State-supported educational institutions. The responsibility for the general administration and operation of the TRS is vested in its Board of Control which consists of 15 trustees. The plan is administered by the Retirement Systems of Alabama (RSA). The *Code of Alabama 1975, Title 16, Chapter 25* grants the authority to establish and amend the benefit terms to the TRS Board of Control. The Plan issues a publicly available financial report that can be obtained at [www.rsa-al.gov](http://www.rsa-al.gov).

#### ***Benefits Provided***

State law establishes retirement benefits as well as death and disability benefits and any ad hoc increase in postretirement benefits for the TRS. Benefits for TRS members vest after 10 years of creditable service. TRS members who retire after age 60 with 10 years or more of creditable service or with 25 years of service (regardless of age) are entitled to an annual retirement benefit, payable monthly for life. Service and disability retirement benefits are based on a guaranteed minimum or a formula method, with the member receiving payment under the method that yields the highest monthly benefit. Under the formula method, members of the TRS are allowed 2.0125% of their average final compensation (highest 3 of the last 10 years) for each year of service.

Act 377 of the Legislature of 2012 established a new tier of benefits (Tier 2) for members hired on or after January 1, 2013. Tier 2 TRS members are eligible for retirement after age 62 with 10 years or more of creditable service and are entitled to an annual retirement benefit, payable monthly for life. Service and disability retirement benefits are based on a guaranteed minimum or a formula method, with the member receiving payment under the method that yields the highest monthly benefit.

Under the formula method, Tier 2 members of the TRS are allowed 1.65% of their average final compensation (highest 5 of the last 10 years) for each year of service. Members are eligible for disability retirement if they have 10 years of credible service, are currently in-service, and determined by the RSA Medical Board to be permanently incapacitated from further performance of duty. Preretirement death benefits equal to the annual earnable compensation of the member as reported to the Plan for the preceding year ending June 30 are paid to a qualified beneficiary.

#### ***Contributions***

Covered members of the TRS contributed 5% of earnable compensation to the TRS as required by statute until September 30, 2011. From October 1, 2011, to September 30, 2012, covered members of the TRS were required by statute to contribute 7.25% of earnable compensation. Effective October 1, 2012, covered members of the TRS are required by statute to contribute 7.50% of earnable compensation. Certified law enforcement, correctional officers, and firefighters of the TRS contributed 6% of earnable compensation as required by statute until September 30, 2011. From October 1, 2011, to September 30, 2012, certified law enforcement, correctional officers, and firefighters of the TRS were required by statute to contribute 8.25% of earnable compensation. Effective October 1, 2012, certified law enforcement, correctional officers, and firefighters of the TRS are required by statute to contribute 8.50% of earnable compensation. Tier 2 covered members of the TRS contribute 6% of earnable compensation to the TRS as required by statute. Tier 2 certified law enforcement, correctional officers, and firefighters of the TRS are required by statute to contribute 7% of earnable compensation.



## Athens City Board of Education

### Notes to Financial Statements

#### As of and for the Year Ended September 30, 2021

---

Participating employers' contractually required contribution rate for the year ended September 30, 2020, was 12.43% of annual pay for Tier 1 members and 11.34% of annual pay for Tier 2 members. These required contribution rates are a percent of annual payroll, actuarially determined as an amount that, when combined with member contributions, is expected to finance the costs of benefits earned by members during the year, with an additional amount to finance any unfunded accrued liability. Total employer contributions to the pension plan from the ACBOE were \$3,031,760 for the year ended September 30, 2021.

#### ***Pension Liabilities, Pension Expense, and Deferred Outflows of Resources and Deferred Inflows of Resources Related to Pensions***

At September 30, 2021, the ACBOE reported a liability of \$42,269,000 for its proportionate share of the collective net pension liability. The collective net pension liability was measured as of September 30, 2020, and the total pension liability used to calculate the net pension liability was determined by an actuarial valuation as of September 30, 2019. The ACBOE's proportion of the collective net pension liability was based on the employers' shares of contributions to the pension plan relative to the total employer contributions of all participating TRS employers. At September 30, 2020, the ACBOE's proportion was 0.341718%, which was an increase of 0.017604% from its proportion measured as of September 30, 2019.

For the year ending September 30, 2021, the ACBOE recognized pension expense of \$5,186,000. At September 30, 2021 the ACBOE reported deferred outflows of resources and deferred inflows of resources related to pensions from the following sources:

	Deferred Outflows of Resources	Deferred Inflows of Resources
Differences between expected & actual experience	\$ 2,092,053	\$ 733,000
Changes of assumptions	439,644	-
Net difference between projected & actual earnings on pension plan investments	3,139,303	-
Changes in proportion & differences between Employer contributions & proportionate share of contributions	2,149,000	607,000
Employer contributions subsequent to the measurement date	3,031,760	-
	<u>\$ 10,851,760</u>	<u>\$ 1,340,000</u>

\$3,031,760 reported as deferred outflows of resources related to pensions resulting from ACBOE contributions subsequent to the measurement date will be recognized as a reduction of the net pension liability in the year ending September 30, 2022. Other amounts reported as deferred outflows of resources and deferred inflows of resources related to pensions will be recognized in pension expense as follows:

#### Year ending September 30:

2022	\$ 1,581,049
2023	1,916,379
2024	1,834,814
2025	1,147,758
2026	-
	<u>\$ 6,480,000</u>

#### ***Actuarial Assumptions***

The total pension liability was determined by an actuarial valuation as of September 30, 2019 using the following actuarial assumptions, applied to all periods included in the measurement:

# Athens City Board of Education

## Notes to Financial Statements

### As of and for the Year Ended September 30, 2021

---

Inflation	2.75%
Projected salary increases	3.25 – 5.00%
Investment rate of return*	7.70%

*\*Net of pension plan investment expense*

The actuarial assumptions used in the actuarial valuation as of September 30, 2019, were based on the results of an investigation of the economic and demographic experience for the TRS based upon participant data as of September 30, 2015. The Board of Control accepted and approved these changes in September 2016 which became effective at the beginning of fiscal year 2016.

Mortality rates for TRS were based on the RP-2000 White Collar Mortality Table projected to 2020 using scale BB and adjusted 115% for males and 112% for females age 78 and older.

The long-term expected rate of return on pension plan investments was determined using a log-normal distribution analysis in which best-estimate ranges of expected future real rates of return (expected returns, net of pension plan investment expense and inflation) are developed for each major asset class. These ranges are combined to produce the long-term expected rate of return by weighting the expected future real rates of return by the target asset allocation percentage and by adding expected inflation. The target asset allocation and best estimates of geometric real rates of return for each major asset class are as follows:

	Target Allocation	Long-Term Expected Rate of Return*
Fixed Income	17.00%	4.40%
U.S. Large Stock	32.00%	8.00%
U.S. Mid Stocks	9.00%	10.00%
U.S. Small Stocks	4.00%	11.00%
International Developed Market Stocks	12.00%	9.50%
International Emerging Market Stocks	3.00%	11.00%
Alternatives	10.00%	10.10%
Real Estate	10.00%	7.50%
Cash Equivalents	3.00%	1.50%
Total	100.00%	

*\*Includes assumed rate of inflation of 2.50%.*

#### **Discount Rate**

The discount rate used to measure the total pension liability was 7.70%. The projection of cash flows used to determine the discount rate assumed that plan member contributions will be made at the current contribution rate and that the employer contributions will be made at rates equal to the difference between actuarially determined contribution rates and the member rate. Based on those assumptions, components of the pension plan's fiduciary net position were projected to be available to make all projected future benefit payments of current pan members. Therefore, the long-term expected rate of return on pension plan investments was applied to all periods of projected benefit payments to determine the total pension liability.

#### **Sensitivity of the ACBOE's Proportionate Share of the Net Pension Liability to Changes in the Discount Rate**

The following table presents the ACBOE's proportionate share of the net pension liability calculated using the discount rate

# Athens City Board of Education

## Notes to Financial Statements

### As of and for the Year Ended September 30, 2021

---

of 7.70%, as well as what the ACBOE's proportionate share of the net pension liability would be if it were calculated using a discount rate that is 1-percentage point lower (6.70%) or 1-percentage-point higher (8.70%) than the current rate:

	1% Decrease (6.70%)	Current Discount Rate (7.70%)	1% Increase (8.70%)
ACBOE's proportionate share of collective net pension liability	\$ 56,396,000	\$ 42,269,000	\$ 30,316,000

#### ***Pension Plan Fiduciary Net Position***

Detailed information about the pension plan's fiduciary net position is available in the separately issued RSA Comprehensive Annual Report for the fiscal year ended September 30, 2020. The supporting actuarial information is included in the GASB Statement No. 67 Report for the TRS prepared as of September 30, 2020. The auditor's report on the Schedule of Employer Allocations and Pension Amounts by Employer and accompanying notes detail by employer and in aggregate information needed to comply with GASB 68. The additional financial and actuarial information is available at <http://www.rsa-al.gov/index.php/employers/financial-reports/gasb-68-reports/>.

#### **B. Risk Management**

The Board is exposed to various risks of loss related to torts, theft of, damage to and destruction of assets, errors and omissions, injuries to employees, and natural disasters. The Board insures against losses by carrying commercial property, liability and workman's compensation insurance. There have been no significant reductions in insurance coverage, and settlement amounts have not exceeded insurance coverage for the current year or the three prior years.

#### **C. Commitments and Contingencies**

Claims and judgments are recorded as liabilities if all the conditions of Governmental Accounting Standards Board pronouncements are met. The liability and expenditure for claims and judgments is only reported in governmental fund types if it has matured. Claims and judgments are recorded in the government-wide statements and proprietary funds as expenses when the related liabilities are incurred. From time to time, the ACBOE is party to various pending claims and legal proceedings. Although the outcome of such matters cannot be forecasted with certainty, it is the opinion of management and the Board attorney that the likelihood is remote that any such claims or proceedings will have a material adverse effect on the Board's financial position or results of operations.

The ACBOE has received federal and state grants for specific purposes that are subject to review and audit by the grantor agencies. Such audits could lead to requests for reimbursements to the grantor agency for expenditures disallowed under terms of the grants. Management believes such disallowances, if any, would be immaterial.

As of September 30, 2021, The ACBOE and City of Athens have committed approximately \$19,000,000 to a vendor for the construction of a new elementary school. As of September 30, 2021, \$1,494,683 had been paid with \$0 held in retainage.

#### **D. Other Postemployment Benefits**

##### ***Governmental Activities***

For purposes of measuring the total OPEB liability, deferred outflows of resources and deferred inflows of resources related to OPEB, and OPEB expense, information about the total position of the plan (OPEB Plan) and additions to/deductions from the OPEB Plan's total position have been determined on the same basis. For this purpose, benefit payments are recognized when currently due and payable in accordance with the benefit terms.

# Athens City Board of Education

## Notes to Financial Statements

### As of and for the Year Ended September 30, 2021

---

Generally accepted accounting principles require that the reported results must pertain to liability and asset information within certain defined timeframes. For this report, the flowing timeframes are used:

Valuation Date	September 30, 2019
Measurement Date	September 30, 2020
Measurement Period	October 1, 2019 to September 30, 2020

The Alabama Retired Education Employees' Health Care Trust (Trust) financial statements are prepared by using the economic resources measurement focus and accrual basis of accounting. This includes for purposes of measuring the net OPEB liability, deferred outflows of resources and deferred inflows of resources related to OPEB, and OPEB expense, information about the fiduciary net position of the Trust and additions to/deductions from the Trust's fiduciary net position. Plan member contributions are recognized in the period in which the contributions are due. Employer contributions are recognized when due pursuant to plan requirements. Benefits are recognized when due and payable in accordance with the terms of the plan. Subsequent events were evaluated by management through the date the financial statements were issued.

#### General Information about the OPEB Plan

##### *Plan description*

The Alabama Retired Education Employees' Health Care Trust (Trust) is a cost-sharing multiple-employer defined benefit postemployment healthcare plan that administers healthcare benefits to the retirees of participating state and local educational institutions. The Trust was established under the Alabama Retiree Health Care Funding Act of 2007 which authorized and directed the Public Education Employees' Health Insurance Board (Board) to create an irrevocable trust to fund postemployment healthcare benefits to retirees participating in PEEHIP. Active and retiree health insurance benefits are paid through the Public Education Employees' Health Insurance Plan (PEEHIP). In accordance with GASB, the Trust is considered a component unit of the State of Alabama (State) and is included in the State's Comprehensive Annual Financial Report.

The PEEHIP was established in 1983 pursuant to the provisions of the *Code of Alabama 1975, Title 16, Chapter 25A* (Act 83-455) to provide a uniform plan of health insurance for active and retired employees of state and local educational institutions which provide instruction at any combination of grades K-14 (collectively, eligible employees), and to provide a method for funding the benefits related to the plan. The four-year universities participate in the plan with respect to their retired employees and are eligible and may elect to participate in the plan with respect to their active employees. Responsibility for the establishment of the health insurance plan and its general administration and operations is vested in the Board. The Board is a corporate body for purposes of management of the health insurance plan. The *Code of Alabama 1975, Section 16-25A-4* provides the Board with the authority to amend the benefit provisions in order to provide reasonable assurance of stability in future years for the plan. All assets of the PEEHIP are held in trust for the payment of health insurance benefits. The Teachers' Retirement System of Alabama (TRS) has been appointed as the administrator of the PEEHIP and, consequently, serves as the administrator of the Trust.

##### *Benefits provided*

PEEHIP offers a basic hospital medical plan to active members and non-Medicare eligible retirees. Benefits include inpatient hospitalization for a maximum of 365 days without a dollar limit, inpatient rehabilitation, outpatient care, physician services, and prescription drugs.

Active employees and non-Medicare eligible retirees who do not have Medicare eligible dependents can enroll in a health maintenance organization (HMO) in lieu of the basic hospital medical plan. The HMO includes hospital medical benefits, dental benefits, vision benefits, and an extensive formulary. However, participants in the HMO are required to receive care from a participating physician in the HMO plan.

**Athens City Board of Education**  
**Notes to Financial Statements**  
**As of and for the Year Ended September 30, 2021**

---

The PEEHIP offers four optional plans (Hospital Indemnity, Cancer, Dental, and Vision) that may be selected in addition to or in lieu of the basic hospital medical plan or HMO. The Hospital Indemnity Plan provides a per-day benefit for hospital confinement, maternity, intensive care, cancer, and convalescent care. The Cancer Plan covers cancer disease only and benefits are provided regardless of other insurance. Coverage includes a per-day benefit for each hospital confinement related to cancer. The Dental Plan covers diagnostic and preventative services, as well as basic and major dental services. Diagnostic and preventative services include oral examinations, teeth cleaning, x-rays, and emergency office visits. Basic and major services include fillings, general aesthetics, oral surgery not covered under a Group Medical Program, periodontics, endodontics, dentures, bridgework, and crowns. Dental services are subject to a maximum of \$1,250 per year for individual coverage and \$1,000 per person per year for family coverage. The Vision Plan covers annual eye examinations, eyeglasses, and contact lens prescriptions.

PEEHIP members may opt to elect the PEEHIP Supplemental Plan as their hospital medical coverage in lieu of the PEEHIP Hospital Medical Plan. The PEEHIP Supplemental Plan provides secondary benefits to the member's primary plan provided by another employer. Only active and non-Medicare retiree members and dependents are eligible for the PEEHIP Supplemental Plan. There is no premium required for this plan, and the plan covers most out-of-pocket expenses not covered by the primary plan. The plan cannot be used as a supplement to Medicare, the PEEHIP Hospital Medical Plan, or the State or Local Governmental Plans administered by the State Employees' Insurance Board (SEIB).

Effective January 1, 2020, Medicare eligible members and Medicare eligible dependents who are covered on a retiree contract were enrolled in the Humana Group Medicare Advantage plan for PEEHIP. The plan is fully insured, and members are able to have all of their Medicare Part A (hospital insurance), Part B (medical insurance), and Part D (prescription drug coverage) in one convenient plan. Retirees can continue to see their same providers with no interruption and see any doctor who accepts Medicare on a national basis. Members have the same benefits in and out-of-network and there is no additional retiree cost share if a retiree uses an out-of-network provider and no balance billing from the provider.

***Contributions***

The *Code of Alabama 1975, Section 16-25A-8* and the *Code of Alabama 1975, Section, 16-25A-8.1* provide the Board with the authority to set the contribution requirements for plan members and the authority to set the employer contribution requirements for each required class, respectively. Additionally, the Board is required to certify to the Governor and the Legislature, the amount, as a monthly premium per active employee, necessary to fund the coverage of active and retired member benefits for the following fiscal year. The Legislature then sets the premium rate in the annual appropriation bill.

For employees who retired after September 30, 2005, but before January 1, 2012, the employer contribution of the health insurance premium set forth by the Board for each retiree class is reduced by 2% for each year of service less than 25 and increased by 2% percent for each year of service over 25 subject to adjustment by the Board for changes in Medicare premium costs required to be paid by a retiree. In no case does the employer contribution of the health insurance premium exceed 100% of the total health insurance premium cost for the retiree.

For employees who retired after December 31, 2011, the employer contribution to the health insurance premium set forth by the Board for each retiree class is reduced by 4% for each year of service less than 25 and increased by 2% for each year over 25, subject to adjustment by the Board for changes in Medicare premium costs required to be paid by a retiree. In no case does the employer contribution of the health insurance premium exceed 100% of the total health insurance premium cost for the retiree. For employees who retired after December 31, 2011, who are not covered by Medicare, regardless of years of service, the employer contribution to the health insurance premium set forth by the Board for each retiree class is reduced by a percentage equal to 1% multiplied by the difference between the Medicare entitlement age and the age of the employee at the time of retirement as determined by the Board. This reduction in the employer contribution ceases upon notification to the Board of the attainment of Medicare coverage.

**Athens City Board of Education**  
**Notes to Financial Statements**  
**As of and for the Year Ended September 30, 2021**

---

***OPEB Liabilities, OPEB Expense, and Deferred Outflows of Resources and Deferred Inflows of Resources Related to OPEB***

At September 30, 2021, the ACBOE reported a liability of \$21,339,766 for its proportionate share of the net OPEB liability. The net OPEB liability was measured as of September 30, 2020 and the total OPEB liability used to calculate the net OPEB liability was determined by an actuarial valuation as of September 30, 2019. The ACBOE's proportion of the net OPEB liability was based on a projection of the ACBOE's long-term share of contributions to the OPEB plan relative to the projected contributions of all participating employers, actuarially determined. At September 30, 2020, the ACBOE's proportion was 0.328817%, which was an decrease of 0.042220% from its proportion measured as of September 30, 2019.

For the year ended September 30, 2021, the ACBOE recognized OPEB benefit of \$688,055, with no special funding situations. At September 30, 2021, the System reported deferred outflows of resources and deferred inflows of resources related to OPEB from the following sources:

	Deferred Outflows of Resources	Deferred Inflows of Resources
Differences between expected & actual experience	\$ 541,161	\$ 7,672,157
Changes of assumptions	7,453,813	3,962,599
Net difference between projected & actual earnings on OPEB plan investments	-	900
Changes in proportion & differences between Employer contributions & proportionate share of contributions	1,031,700	2,973,955
Employer contributions subsequent to the measurement date	566,649	-
	<u>\$ 9,593,323</u>	<u>\$ 14,609,611</u>

\$566,649 reported as deferred outflows of resources related to OPEB resulting from the ACBOE's contributions subsequent to the measurement date will be recognized as a reduction of the net OPEB liability in the year ending September 30, 2022.

Other amounts reported as deferred outflows of resources and deferred inflows of resources related to OPEB will be recognized in OPEB expense as follows:

Year ending September 30:		
2022	\$	(1,788,981)
2023		(1,756,474)
2024		(1,322,165)
2025		(1,537,160)
2026		385,894
Thereafter		435,949
	<u>\$</u>	<u>(5,582,937)</u>

***Actuarial assumptions***

The total OPEB liability was determined by an actuarial valuation as of September 30, 2019, using the following actuarial assumptions, applied to all periods included in the measurement:

Inflation	2.75%
Projected Salary increases	3.25% - 5.00%, includes 3.00% wage inflation
Long-Term Investment Rate of Return	7.25%*
Municipal Bond Index Rate at the Measurement Date	2.25%
Municipal Bond Index Rate at the Prior Measurement Date	3.00%
Projected Year for Fiduciary Net Position (FNP) to be Depleted	2040

**Athens City Board of Education**  
**Notes to Financial Statements**  
**As of and for the Year Ended September 30, 2021**

---

Single Equivalent Interest Rate at the Measurement Date	3.05%
Single Equivalent Interest Rate at the Prior Measurement Date	5.50%
Healthcare Cost Trend Rate	
Pre-Medicare Eligible	6.75%
Medicare Eligible	**
Ultimate Trend Rate	
Pre-Medicare Eligible	4.75% in 2027
Medicare Eligible	4.75% in 2024

\* *Compounded annually, net of investment expense, and includes inflation.*

\*\* *Initial Medicare claims are set based on scheduled increases through plan year 2022.*

Mortality rates for the period after service retirement are according to the RP-2000 White Collar Mortality Table projected to 2020 using scale BB and adjusted 115% for all ages for males and 112% for ages 78 and over for females. The rates of disabled mortality were based on the RP-2000 Disabled Mortality Table projected to 2020 using scale BB and adjusted 105% for males and 120% for females.

The decremental assumptions used in the valuation were selected based on the actuarial experience study prepared as of September 30, 2015, submitted to, and adopted by the Teachers' Retirement System of Alabama Board on September 13, 2016. The remaining actuarial assumptions (e.g., initial per capita costs, health care cost trends, rate of plan participation, rates of plan election, etc.) were based on the September 30, 2019 valuation.

The long-term expected return on plan assets is to be reviewed as part of regular experience studies prepared every five years, in conjunction with similar analysis for the Teachers' Retirement System of Alabama. Several factors should be considered in evaluating the long-term rate of return assumption, including long-term historical data, estimates inherent in current market data, and a log-normal distribution analysis in which best-estimate ranges of expected future real rates of return (expected return, net of investment expense and inflation), as developed for each major asset class. These ranges should be combined to produce the long-term expected rate of return by weighting the expected future real rates of return by the target asset allocation percentage and then adding expected inflation. The assumption is intended to be a long-term assumption and is not expected to change absent a significant change in the asset allocation, a change in the inflation assumption, or a fundamental change in the market that alters expected returns in future years.

The long-term expected rate of return on the OPEB plan investments is determined based on the allocation of assets by asset class and by the mean and variance of real returns.

The target asset allocation and best estimates of expected geometric real rates of return for each major asset class is summarized below:

	Target Allocation	Long-Term Expected Rate of Return*
Fixed Income	30.00%	4.40%
U.S. Large Stock	38.00%	8.00%
U.S. Mid Stocks	8.00%	10.00%
U.S. Small Stocks	4.00%	11.00%
International Developed Market Stocks	15.00%	9.50%
Cash	5.00%	1.50%
Total	100.00%	

\* *Includes assumed rate of inflation of 2.50%.*

**Athens City Board of Education**  
**Notes to Financial Statements**  
**As of and for the Year Ended September 30, 2021**

---

**Discount Rate**

The discount rate (also known as the Single Equivalent Interest Rate (SEIR), as described by GASB 74) used to measure the total OPEB liability at September 30, 2020 was 3.05%. The discount rate used to measure the total OPEB liability at the prior measurement date was 5.50%. Premiums paid to the Public Education Employees' Health Insurance Board for active employees shall include an amount to partially fund the cost of coverage for retired employees. The projection of cash flows used to determine the discount rate assumed that plan contributions will be made at the current contribution rates. Each year, the State specifies the monthly employer rate that participating school systems must contribute for each active employee. Approximately, 14.802% of the employer contributions were used to assist in funding retiree benefit payments in 2020. It is assumed that the 14.802% will increase at the same rate as expected benefit payments for the closed group until reaching an employer rate of 20.000%, at which point this amount will increase by 1.00% in subsequent years. The discount rate determination will use a municipal bond rate to the extent the trust is projected to run out of money before all benefits are paid. Therefore, the projected future benefit payments for all current plan members were projected through 2118. The long-term rate of return is used until the assets are expected to be depleted in 2040, after which the municipal bond rate is used.

***Sensitivity of the ACBOE's proportionate share of the net OPEB liability to changes in the healthcare cost trend rates.***

The following table presents the ACBOE's proportionate share of the net OPEB liability of the Trust calculated using the current healthcare trend rate, as well as what the net OPEB liability would be if calculated using one percentage point lower or one percentage point higher than the current rate:

	1% Decrease (5.75%) <sup>1</sup>	Current Healthcare Trend Rate (6.75%) <sup>2</sup>	1% Increase (7.75%) <sup>3</sup>
Net OPEB Liability	\$ 16,869,154	\$ 21,339,766	\$ 27,158,982

<sup>1</sup>5.75% decreasing to 3.75% for pre-Medicare, 3.75% for Medicare Eligible, and 1% for Optional Plans

<sup>2</sup>6.75% decreasing to 4.75% for pre-Medicare, 4.75% for Medicare Eligible, and 2% for Optional Plans

<sup>3</sup>7.75% decreasing to 5.75% for pre-Medicare, 5.75% for Medicare Eligible, and 3% for Optional Plans

The following table presents the ACBOE's proportionate share of the net OPEB liability of the Trust calculated using the discount rate of 3.05%, as well as what the net OPEB liability would be if calculated using one percentage point lower or one percentage point higher than the current rate:

	1% Decrease (2.05%)	Current Discount Rate (3.05%)	1% Increase (4.05%)
Net OPEB Liability	\$ 26,174,330	\$ 21,339,766	\$ 17,500,074

**OPEB plan fiduciary net position**

Detailed information about the OPEB plan's fiduciary net position is located in the Trust's financial statements for the fiscal year ended September 30, 2020. The supporting actuarial information is included in the GASB Statement No. 74 Report for PEEHIP prepared as of September 30, 2020. Additional financial and actuarial information is available at [www.rsa-al.gov](http://www.rsa-al.gov).

**E. Related Parties**

During the year ended September 30, 2021, the City paid \$6,147,936 in sales tax revenue to the ACBOE.



**Athens City Board of Education**  
**Notes to Financial Statements**  
**As of and for the Year Ended September 30, 2021**

---

**F. Subsequent Events**

Management has evaluated events and transactions for potential recognition or disclosure through the date of the auditors' report, which was the date the financial statements were available to be issued.

**G. Donated Food Program**

The commodities received from the Federal government in connection with the donated food program are reflected in the accompanying financial statements. The total assigned value of commodities donated was \$78,929 for 2021.

**Athens City Board of Education**  
**Schedule of Revenues, Expenditures, and Change in Fund Balance –**  
**Budget and Actual**  
**For the Year Ended September 30, 2021**

	Budgeted Amounts		Actual	Variance With
	Original	Final	Budgetary Basis	Final Budget
<b>Revenues</b>				
State Sources	\$ 27,934,210	\$ 28,500,183	\$ 29,982,084	\$ 1,481,901
Federal Sources	-	380	620	240
Local Sources	18,632,235	20,190,768	24,973,360	4,782,592
Other Sources	59,000	59,000	63,220	4,220
Total Revenues	46,625,445	48,750,331	55,019,284	6,268,953
<b>Expenditures</b>				
Instructional Services	24,644,749	25,164,861	24,205,359	(959,502)
Instructional Support Services	6,490,981	7,255,304	7,177,018	(78,286)
Operation and Maintenance Services	5,042,622	5,067,921	4,316,467	(751,454)
Student Transportation Services	1,274,694	1,291,556	1,155,937	(135,619)
Food Services	4,780	3,780	-	(3,780)
General Administrative Services	2,433,628	2,281,688	1,902,686	(379,002)
Debt Service				
Principal Retirement	1,783,954	1,783,954	246,550	(1,537,404)
Interest & Fiscal Charges	2,518,708	2,518,708	2,518,700	(8)
Other Debt Service Costs	-	-	1,370,218	1,370,218
Capital Outlay	400,000	137,438	308,170	170,732
Other Expenditures	365,153	379,777	521,451	141,674
Total Expenditures	44,959,269	45,884,987	43,722,556	(2,162,431)
Excess of Revenues				
Over Expenditures	1,666,176	2,865,344	11,296,728	8,431,384
<b>Other Financing Sources (Uses)</b>				
Transfers In	119,465	109,585	71,146	(38,439)
Transfers Out	(586,364)	(1,086,039)	(5,457,138)	(4,371,099)
Other Sources	153,045	152,264	137,421	(14,843)
Total Other Financing Sources (Uses)	(313,854)	(824,190)	(5,248,571)	(4,424,381)
Excess of Revenues & Other Sources Over				
Expenditures & Other Uses	1,352,322	2,041,154	6,048,157	4,007,003
Fund Balance, Beginning	9,188,387	12,083,817	7,266,643	(4,817,174)
Fund Balance, Ending	\$ 10,540,709	\$ 14,124,971	\$ 13,314,800	\$ (810,171)

**Athens City Board of Education**  
**Notes to Schedule of Revenues, Expenditures, and Change in Fund Balance –**  
**Budget and Actual**  
**For the Year Ended September 30, 2021**

---

	<u><b>General Fund</b></u>
<b>Uses/outflows of resources</b>	
Actual amounts (budgetary basis) available for expenditures shown as Total Expenditures on the budgetary comparison schedule	\$ 43,722,556
Differences--budget to GAAP	
The School System budgets revenues and expenditures to the extent they are expected to be received or paid in the current fiscal period, rather than on the modified accrual basis.	<u>763,351</u>
Total expenditures are reported on the statement of revenues, expenditures and changes in fund balances--governmental funds.	<u><u>\$ 44,485,907</u></u>

**Athens City Board of Education**  
**Schedule of Proportionate Share of the Net OPEB Liability**  
**For the Measurement Period Ended September 30:**

---

	2020	2019	2018	2017
ACBOE's proportion of the net OPEB liability	0.328817%	0.371037%	0.361014%	0.350300%
ACBOE's proportionate share of the net OPEB liability	\$ 21,339,766	\$ 13,998,365	\$ 29,670,753	\$ 26,018,283
ACBOE's covered-employee payroll	\$ 25,211,779	\$ 22,870,980	\$ 22,749,216	\$ 20,339,904
ACBOE's proportionate share of the net OPEB liability as a percentage of its covered-employee payroll	84.64%	61.21%	130.43%	127.92%
Plan fiduciary net position as a percentage of the total OPEB liability	19.80%	28.14%	14.81%	15.37%

**Notes to the Schedule of Proportionate Share of the Net OPEB Liability**

Schedule is intended to show information for 10 years. Additional years will be displayed as they become available.

**Athens City Board of Education  
Schedule of OPEB Contributions  
For the Years Ended September 30:**

	2021	2020	2019	2018
Contractually required contribution	\$ 566,649	\$ 651,104	\$ 1,059,768	\$ 850,316
Contributions in relation to the contractually required contribution	(566,649)	(651,104)	(1,059,768)	(850,377)
Contribution deficiency (excess)	\$ -	\$ -	\$ -	\$ (61)
ACBOE's covered-employee payroll	\$ 25,254,267	\$ 25,211,779	\$ 22,870,980	\$ 22,749,216
Contributions as a percentage of covered-employee payroll	2.24%	2.58%	4.63%	3.74%

**Notes to the Schedule of OPEB Contributions**

Schedule is intended to show information for 10 years. Additional years will be displayed as they become available.

***Changes in actuarial assumptions***

In 2019, the anticipated rates of participation, spouse coverage, and tobacco use were adjusted to more closely reflect actual experience. In 2016, rates of withdrawal, retirement, disability, mortality, spouse coverage, and tobacco usage were adjusted to more closely reflect actual experience. In 2016, economic assumptions and the assumed rates of salary increase were adjusted to more closely reflect actual and anticipated experience. In 2016 and later, the expectation of retired life mortality was changed to the RP-2000 White Collar Mortality Table projected to 2020 using scale BB and adjusted 115% for all ages for males and 112% for ages 78 and over for females.

***Recent Plan Changes***

Beginning in plan year 2021, the MAPD plan premium rates exclude the ACA Health Insurer Fee which was repealed on December 20, 2019.

Effective January 1, 2017, Medicare eligible medical and prescription drug benefits are provided through the MAPD plan.

The Health Plan is changed each year to reflect the ACA maximum annual out-of-pocket amounts.

***Method and assumptions used in calculations of actuarially determined contributions***

The actuarially determined contribution rates in the Schedule of OPEB Contributions were calculated as of September 30, 2018, which is three years prior to the end of the fiscal year in which contributions are reported. The following actuarial methods and assumptions were used to determine the most recent contribution rate reported in that schedule:

**Athens City Board of Education**  
**Schedule of OPEB Contributions**  
**For the Years Ended September 30:**

---

Actuarial cost method	Entry Age Normal
Amortization method	Level percent of pay
Remaining amortization period	25 years, closed
Asset valuation method	Market Value of Assets
Inflation	2.75%
Healthcare Cost Trend Rate:	
Pre-Medicare Eligible	7.00%
Medicare Eligible	5.00%
Ultimate Trend Rate:	
Pre-Medicare Eligible	4.75%
Medicare Eligible	4.75%
Years of Ultimate Trend Rate	2026 for Pre-Medicare Eligible 2024 for Medicare Eligible
Investment Rate of Return	5.00%, including inflation

**Athens City Board of Education**  
**Schedule of Proportionate Share of the Net Pension Liability**  
**For the Years Ended September 30:**

---

	2021	2020	2019	2018	2017	2016	2015
System's Proportion of the Net Pension Liability	0.341718%	0.324114%	0.333860%	0.327131%	0.315628%	0.296635%	0.290857%
System's Proportionate Share of the Net Pension Liability	\$ 42,269,000	\$ 35,837,000	\$ 33,194,000	\$ 32,152,000	\$ 34,170,000	\$ 31,045,000	\$ 26,423,000
System's Covered-Employee Payroll	\$ 25,211,779	\$ 22,870,980	\$ 22,749,216	\$ 20,339,904	\$ 19,003,805	\$ 18,608,227	\$ 16,176,696
System's Proportionate Share of the Net Pension Liability as a Percentage of its Covered-Employee Payroll	167.66%	156.69%	145.91%	158.07%	179.81%	166.84%	163.34%
Plan Fiduciary Net Position as a Percentage of the Total Pension Liability	67.72%	69.85%	72.29%	71.50%	67.93%	67.51%	71.01%

<sup>1</sup>System's Covered-Employee Payroll during the measurement period is the total covered payroll. For fiscal year 2021 the measurement period is October 1, 2019 - September 30, 2020.

**Notes to the Schedule of the System's Proportionate Share of the Net Position Liability**

This schedule presents only seven years of information, rather than ten years, as only seven years of trend information are available at September 30, 2021.

**Athens City Board of Education**  
**Schedule of Employer Contributions**  
**For the Years Ended September 30:**

	2021	2020	2019	2018	2017	2016	2015
Actuarially determined contribution <sup>1</sup>	\$ 3,031,760	\$ 2,947,000	\$ 1,083,782	\$ 1,022,772	\$ 1,053,760	\$ 1,060,244	\$ 1,019,224
Contributions in relation to the actuarially determined contribution	(3,031,760)	(2,947,000)	(1,083,782)	(1,022,772)	(1,053,760)	(1,060,244)	(1,019,224)
Contribution deficiency (excess)	\$ -	\$ -	\$ -	\$ -	\$ -	\$ -	\$ -
Covered payroll <sup>2</sup>	\$ 25,254,267	\$ 25,211,779	\$ 22,870,980	\$ 22,749,216	\$ 20,339,904	\$ 19,003,805	\$ 18,608,227
Contributions as a percentage of covered payroll	12.00%	11.69%	4.74%	4.50%	5.18%	5.58%	5.48%

<sup>1</sup>The amount of employer contributions related to normal and accrued liability components of employer rate net of any refunds or error service payments. The Schedule of Employer Contributions is based on the 12 month period of the underlying financial statement.

<sup>2</sup>Employer's covered payroll for fiscal year 2021 is the total covered payroll for the 12 month period of the underlying financial statement.

**Notes to the Schedule of Employer Contributions**

This schedule presents only seven years of information, rather than ten years, as only seven years of trend information are available at September 30, 2021.

Actuarially determined contribution rates are calculated as of September 30, three years prior to the end of the fiscal year in which contributions are reported. Contributions for fiscal year 2021 were based on the September 30, 2018 actuarial valuation date.

Methods and assumptions used to determine contribution rates:

Actuarial cost method	Entry Age
Amortization method	Level percent closed
Remaining amortization period	26.2 years
Asset valuation method	Five-year smoothed market
Inflation	2.75%
Salary increases	3.25 – 5.00%, including inflation
Investment rate of return	7.70%*

\*Net of pension plan investment expense, including inflation.





**INDEPENDENT AUDITOR'S REPORT ON INTERNAL CONTROL OVER FINANCIAL REPORTING AND ON  
COMPLIANCE AND OTHER MATTERS BASED ON AN AUDIT OF FINANCIAL STATEMENTS  
PERFORMED IN ACCORDANCE WITH *GOVERNMENT AUDITING STANDARDS***

---

To the Board Members  
Athens City Board of Education  
Athens, Alabama

We have audited, in accordance with the auditing standards generally accepted in the United States of America and the standards applicable to financial audits contained in *Government Auditing Standards* issued by the Comptroller General of the United States, the financial statements of the governmental activities, each major fund, and the aggregate remaining fund information of the Athens City Board of Education (the "Board") as of and for the year ended September 30, 2021, and the related notes to the financial statements, which collectively comprise the Board's basic financial statements and have issued our report thereon March 31, 2022.

**Internal Control over Financial Reporting**

In planning and performing our audit of the financial statements, we considered the Department's internal control over financial reporting (internal control) as a basis for designing audit procedures that are appropriate in the circumstances for the purpose of expressing our opinions on the financial statements, but not for the purpose of expressing an opinion on the effectiveness of the Department's internal control. Accordingly, we do not express an opinion on the effectiveness of the Department's internal control.

A *deficiency in internal control* exists when the design or operation of a control does not allow management or employees, in the normal course of performing their assigned functions, to prevent, or detect and correct, misstatements on a timely basis. A *material weakness* is a deficiency, or a combination of deficiencies, in internal control, such that there is a reasonable possibility that a material misstatement of the entity's financial statements will not be prevented, or detected and corrected, on a timely basis. A *significant deficiency* is a deficiency, or a combination of deficiencies, in internal control that is less severe than a material weakness, yet important enough to merit attention by those charged with governance.

Our consideration of internal control was for the limited purpose described in the first paragraph of this section and was not designed to identify all deficiencies in internal control that might be material weaknesses or significant deficiencies. Given these limitations, during our audit we did not identify any deficiencies in internal control that we consider to be material weaknesses. However, material weaknesses may exist that have not been identified.

**Compliance and Other Matters**

As part of obtaining reasonable assurance about whether the Department's financial statements are free from material misstatement, we performed tests of its compliance with certain provisions of laws, regulations, contracts, and grant agreements, noncompliance with which could have a direct and material effect on the financial statements. However, providing an opinion on compliance with those provisions was not an objective of our audit, and accordingly, we do not express such an opinion. The results of our tests disclosed no instances of noncompliance or other matters that are required to be reported under Government Auditing Standards.

---

**Purpose of this Report**

The purpose of this report is solely to describe the scope of our testing of internal control and compliance and the results of that testing, and not to provide an opinion on the effectiveness of the entity's internal control or on compliance. This report is an integral part of an audit performed in accordance with *Government Auditing Standards* in considering the entity's internal control and compliance. Accordingly, this communication is not suitable for any other purpose.

*Mauldin & Jenkins, LLC*

March 31, 2022  
Athens, Alabama



**INDEPENDENT AUDITOR'S REPORT ON COMPLIANCE FOR EACH MAJOR PROGRAM AND ON INTERNAL CONTROL OVER COMPLIANCE REQUIRED BY THE UNIFORM GUIDANCE; AND REPORT ON SCHEDULE OF EXPENDITURES OF FEDERAL AWARDS REQUIRED BY THE UNIFORM GUIDANCE**

---

To the Board Members  
Athens City Board of Education  
Athens, Alabama

**Report on Compliance for Each Major Federal Program**

We have audited the Athens City Board of Education's (the "Board") compliance with the types of compliance requirements described in the *OMB Compliance Supplement* that could have a direct and material effect on each of the Board's major federal programs for the year ended September 30, 2021. The Board's major federal programs are identified in the summary of auditor's results section of the accompanying schedule of findings and questioned costs.

***Management's Responsibility***

Management is responsible for compliance with the federal statutes, regulations, and the terms and conditions of its federal awards applicable to its federal programs.

***Auditor's Responsibility***

Our responsibility is to express an opinion on compliance for each of the Board's major federal programs based on our audit of the types of compliance requirements referred to above. We conducted our audit of compliance in accordance with auditing standards generally accepted in the United States of America; the standards applicable to financial audits contained in *Government Auditing Standards*, issued by the Comptroller General of the United States; and the audit requirements of Title 2 U.S. Code of Federal Regulations Part 200, *Uniform Administrative Requirements, Cost Principles, and Audit Requirements for Federal Awards* (Uniform Guidance). Those standards and the Uniform Guidance require that we plan and perform the audit to obtain reasonable assurance about whether noncompliance with the types of compliance requirements referred to above that could have a direct and material effect on a major federal program occurred. An audit includes examining, on a test basis, evidence about the Board's compliance with those requirements and performing such other procedures as we considered necessary in the circumstances.

We believe that our audit provides a reasonable basis for our opinion on compliance for each major federal program. However, our audit does not provide a legal determination of the Board's compliance.

***Opinion on Each Major Federal Program***

In our opinion, the Board complied, in all material respects, with the types of compliance requirements referred to above that could have a direct and material effect on each of its major federal programs for the year ended September 30, 2021.

---

## Report on Internal Control over Compliance

Management of the Board is responsible for establishing and maintaining effective internal control over compliance with the types of compliance requirements referred to above. In planning and performing our audit of compliance, we considered the Board's internal control over compliance with the types of requirements that could have a direct and material effect on each major federal program to determine the auditing procedures that are appropriate in the circumstances for the purpose of expressing an opinion on compliance for each major federal program and to test and report on internal control over compliance in accordance with the Uniform Guidance, but not for the purpose of expressing an opinion on the effectiveness of internal control over compliance. Accordingly, we do not express an opinion on the effectiveness of the Board's internal control over compliance.

*A deficiency in internal control over compliance* exists when the design or operation of a control over compliance does not allow management or employees, in the normal course of performing their assigned functions, to prevent, or detect and correct, noncompliance with a type of compliance requirement of a federal program on a timely basis. A *material weakness in internal control over compliance* is a deficiency, or combination of deficiencies, in internal control over compliance, such that there is a reasonable possibility that material noncompliance with a type of compliance requirement of a federal program will not be prevented, or detected and corrected, on a timely basis. A *significant deficiency in internal control over compliance* is a deficiency, or a combination of deficiencies, in internal control over compliance with a type of compliance requirement of a federal program that is less severe than a material weakness in internal control over compliance, yet important enough to merit attention by those charged with governance.

Our consideration of internal control over compliance was for the limited purpose described in the first paragraph of this section and was not designed to identify all deficiencies in internal control over compliance that might be material weaknesses or significant deficiencies. We did not identify any deficiencies in internal control over compliance that we consider to be material weaknesses. However, material weaknesses may exist that have not been identified.

The purpose of this report on internal control over compliance is solely to describe the scope of our testing of internal control over compliance and the results of that testing based on the requirements of the Uniform Guidance. Accordingly, this report is not suitable for any other purpose.

## Report on Schedule of Expenditures of Federal Awards Required by the Uniform Guidance

We have audited the governmental activities, each major fund, and the aggregate remaining fund information of the Athens City Board of Education (the "Board") as of and for the year ended September 30, 2021, and the related notes to the financial statements, which collectively comprise the Board's basic financial statements as listed in the table of contents. We issued our report thereon dated March 31, 2021, which contained unmodified opinions on those financial statements. Our audit was conducted for the purpose of forming opinions on the financial statements that collectively comprise the basic financial statements. The accompanying schedule of expenditures of federal awards is presented for purposes of additional analysis as required by the Uniform Guidance and is not a required part of the basic financial statements. Such information is the responsibility of management and was derived from and relates directly to the underlying accounting and other records used to prepare the basic financial statements.

---

The information has been subjected to the auditing procedures applied in the audit of the financial statements and certain additional procedures, including comparing and reconciling such information directly to the underlying accounting and other records used to prepare the basic financial statements or to the basic financial statements themselves, and other additional procedures in accordance with auditing standards generally accepted in the United States of America. In our opinion, the schedule of expenditures of federal awards is fairly stated in all material respects in relation to the basic financial statements as a whole.

*Mauldin & Jenkins, LLC*

May 27, 2022, except for our report on the schedule of expenditures of federal awards, for which the date is March 31, 2022  
Athens, Alabama

**Athens City Board of Education**  
**Schedule of Expenditures of Federal Awards**  
**For the Year Ended September 30, 2021**

Federal Grantor/Pass-Through Grantor/ Program or Cluster Title	Federal Assistance Listing Number	Pass-Through Entity Identifying Number	Assistance Period	Passed Through To Sub-Recipients	Total Federal Expenditures
<b>MAJOR PROGRAMS</b>					
<u><b>U.S. Department of Education</b></u>					
<u><b>Passed through Alabama State Department of Education</b></u>					
Education Stabilization Fund - Governor's Emergency Relief Fund	84.425C	159	10/1/20-9/30/21	\$ -	\$ 224,105
Education Stabilization Fund - ESSERF	84.425D	159	10/1/20-9/30/21	-	597,231
Education Stabilization Fund - ARPA	84.425U	159	10/1/20-9/30/21	-	44,607
Total U.S. Department of Education				-	865,943
<u><b>U.S. Department of the Treasury</b></u>					
<u><b>Passed through Alabama State Department of Education</b></u>					
Coronavirus Relief Fund	21.019	159	10/1/20-9/30/21	-	924,084
Total U.S. Department of the Treasury				-	924,084
<b>Total Major Programs</b>				-	1,790,027
<b>NON-MAJOR PROGRAMS</b>					
<u><b>U.S. Department of Education</b></u>					
<u><b>Passed through Alabama State Department of Education</b></u>					
<u><b>Special Education Cluster</b></u>					
Special Education Grants to States - IDEA, Part B	84.027	159	10/1/20-9/30/21	-	885,605
Special Education - Preschool Grants - IDEA, Part B	84.173	159	10/1/20-9/30/21	-	16,515
Total Special Education Cluster				-	902,120
Title I Grants to Local Education Agencies	84.010	159	10/1/20-9/30/21	-	777,173
Vocational Education Basic Grants to States	84.048	159	10/1/20-9/30/21	-	56,871
Improving Teacher Quality State Grants	84.367	159	10/1/20-9/30/21	-	141,469
English Language Acquisition Grants	84.365	159	10/1/20-9/30/21	-	51,653
Title IV Student Support and Academic Enrichment Grant	84.424	159	10/1/20-9/30/21	-	54,488
Total U.S. Department of Education				-	1,983,774

See notes to Schedule of Expenditures of Federal Awards.

**Athens City Board of Education**  
**Schedule of Expenditures of Federal Awards**  
**For the Year Ended September 30, 2021**

<b>Federal Grantor/Pass-Through Grantor/ Program or Cluster Title</b>	<b>Federal Assistance Listing Number</b>	<b>Pass-Through Entity Identifying Number</b>	<b>Assistance Period</b>	<b>Passed Through To Sub-Recipients</b>	<b>Total Federal Expenditures</b>
<b><u>U.S. Department of Agriculture</u></b>					
<b><u>Passed through Alabama State Department of Education</u></b>					
<b><u>Child Nutrition Cluster</u></b>					
State Administrative Expenses for Child Nutrition	10.560	159	10/1/20-9/30/21	-	3,071
Summer Food Service Program for Children	10.559	159	10/1/20-9/30/21	-	1,853,072
National School Lunch Program	10.555	159	10/1/20-9/30/21	-	584,565
<i>Total Child Nutrition Cluster</i>				-	2,440,708
Child and Adult Care Food Program	10.558	159	10/1/20-9/30/21	-	139,947
Commodity Supplemental Food Program (non-cash)	10.565	159	10/1/20-9/30/21	-	78,929
Total U.S. Department of Agriculture				-	2,659,584
<b>Total Non-Major Programs</b>				-	4,643,358
<b>Total Federal Awards</b>				\$ -	\$ 6,433,385

See notes to Schedule of Expenditures of Federal Awards.

**Athens City Board of Education**  
**Notes to the Schedule of Expenditures of Federal Awards**  
**For the Year Ended September 30, 2021**

---

**NOTE I - BASIS OF PRESENTATION**

The accompanying Schedule of Expenditures of Federal Awards (the "Schedule") includes the federal award activity of the Athens City Board of Education (the "Board") under programs of the federal government for the year ended September 30, 2021. The information in this schedule is presented in accordance with the requirements of Title 2 U.S. *Code of Federal Regulations* Part 200, *Uniform Administrative Requirements, Cost Principles, and Audit Requirements for Federal Awards* (Uniform Guidance). Because the Schedule presents only a selected portion of the operations of the Board, it is not intended to and does not present the financial position, changes in net position or cash flows of the Board.

**NOTE II – SUMMARY OF SIGNIFICANT ACCOUNTING POLICIES**

Expenditures reported on the Schedule are reported on the accrual basis of accounting. Such expenditures are recognized following the cost principles contained in the Uniform Guidance, wherein certain types of expenditures are not allowable or are limited as to reimbursement. The Board has elected not to use the 10-percent de-minimis indirect cost rate allowed under the Uniform Guidance.

Various reimbursement procedures are used for Federal awards received by the Board. Consequently, timing differences between expenditures and program reimbursements can exist at the beginning and end of the year. Accrued balances at year-end represent an excess of expenditures over cash reimbursements received to date. Generally, accrued or deferred balances caused by differences in the timing of cash reimbursements and expenditures will be reversed in the remaining grant period.

For purposes of the Schedule, federal awards include all grants, contracts and similar agreements entered into directly between the Board and agencies and departments of the federal government and all subawards to the Board by nonfederal organizations pursuant to federal grants, contracts and similar agreements. The awards are classified into Type A and Type B categories in accordance with the provisions of Title 2 U.S. *Code of Federal Regulations* Part 200, *Uniform Administrative Requirements, Cost Principles, and Audit Requirements for Federal Awards* (Uniform Guidance). Programs classified as Type A are as follows:

Special Education Programs  
Title I Grants to Local Education Agencies  
Child Nutrition Programs  
Coronavirus Relief Programs  
Education Stabilization Programs

***Federal CFDA Numbers***

Catalog of Federal Domestic Assistance (CFDA) numbers are assigned to contracts and grants on the basis of program type. CFDA numbers and pass-through numbers are provided when available.

**NOTE III – RECONCILIATION OF THE SCHEDULE OF EXPENDITURES OF FEDERAL AWARDS TO THE STATEMENT OF ACTIVITIES**

The following schedule is a reconciliation of total federal expenditures as shown on the Schedule of Expenditures of Federal Awards to the revenue items shown on the Statement of Activities for the year ended September 30, 2021.

Operating Grants and Contributions	\$ 34,271,807
Capital Grants and Contributions	1,436,622
Less State and Local Grants	<u>(29,275,044)</u>
Expenditures per Schedule of Expenditures of Federal Awards	<u>\$ 6,433,385</u>



**Athens City Board of Education**  
**Schedule of Findings and Questioned Costs**  
**For the Year Ended September 30, 2021**

---

**Section I - Summary of Auditor's Results**

**Financial Statements**

Type of auditor's report issued: Unmodified

Internal control over financial reporting:

Material weakness(es) identified?	<input type="checkbox"/> yes	<input checked="" type="checkbox"/> no
Significant deficiency(ies) identified?	<input type="checkbox"/> yes	<input checked="" type="checkbox"/> none reported
Noncompliance material to financial statements noted?	<input type="checkbox"/> yes	<input checked="" type="checkbox"/> no

**Federal Awards**

Internal control over major programs:

Material weakness(es) identified?	<input type="checkbox"/> yes	<input checked="" type="checkbox"/> no
Significant deficiency(ies) identified?	<input type="checkbox"/> yes	<input checked="" type="checkbox"/> none reported

Type of auditor's report issued on compliance for major programs: Unmodified

Any audit findings disclosed that are required to be reported in accordance with 2 CFR 200.516(a)

<input type="checkbox"/> yes	<input checked="" type="checkbox"/> no
------------------------------	--

**Identification of major programs:**

<b>Federal Assistance Listing Number(s)</b>	<b>Name of Federal Program or Cluster</b>
	<u>U.S. Department of Education</u>
84.425C	Education Stabilization Fund - Governor's Emergency Relief Fund
84.425D	Education Stabilization Fund - ESSERF
84.425U	Education Stabilization Fund - ARPA
	<u>U.S. Department of the Treasury</u>
21.019	Coronavirus Relief Fund

Dollar Threshold to Distinguish Between Type A and Type B Programs \$750,000

Auditee qualified as low-risk auditee? ☒ yes ☐ no

**Section II – Financial Statement Findings**

The audit did not disclose any financial statement findings required to be reported.

**Section III – Federal Award Findings and Questioned Costs**

The audit did not disclose any federal award findings or questioned costs required to be reported.

**Athens City Board of Education**  
**Schedule of Prior Year Findings and Questioned Costs**

---

There were no prior year federal award findings or questioned costs required to be reported.